



Way of Life!

**GENUINE
RIGGING-PARTS
AND
ACCESSORIES**



WELCOME TO THE 50TH ANNIVERSARY OF SUZUKI OUTBOARDS

We've been at the forefront of outboard technology since we created our first outboard D55 in 1965 and will be celebrating the 50th anniversary in 2015.

The engines used in our outboard motors have always been designed exclusively for marine use and we have continually brought original technologies to the market. We have lead the way with innovations such as the down thrust propeller system in 1965, developing the first ever stainless steel water pump housing in 1973, launching oil injection outboards in 1980, inventing ceramic fibre reinforced metal pistons in 1990, introducing the world's first 220.7kW (300PS) V6 four stroke outboard in 2006 and, in another world first, launching a keyless ignition system on the DF200AP.

We have come a long way since 1965 and our current range of four stroke outboards is second to none in the market place. Our engineers are passionate about boating and willing to spend all of their time perfecting our outboard motors so that our products enable you to maximise your time on the water. So, from the light-weight and portable DF2.5 to the award winning power of the DF300AP, we've got an outboard to suit your way of life.



1960s - D55



1970s - DT25



1980s - DT200 EXANTÉ

KEY MOMENTS IN OUR HISTORY:

1965

Our first outboard, the D55, launched..

1966

Export of Suzuki Outboard Motors begins.

1980

We first invented oil injection for outboards, and introduced oil injection series DT850I, DT1150I and DT1400I.

1985

DT150 and DT200, our first V6 models launched.

1987

DT200 Exanté wins the first "Most Innovative Products" award from the National Marine Manufacture's association (NMMA).

1990

DT225 added to V6 series and new Electronic Fuel Injection System introduced.

1994

Introduction of DF9.9 and DF15, our first four stroke outboards.

1997

Introduction of DF60 and DF70, our first four stroke outboards with Electronic Fuel Injection System. DF60 and DF70 win the "Innovation Award" from the International Marine Trades Exposition and Convention (IMTEC).

1998

Introduction of DF40 and DF50, our first four stroke outboards with DOHC 4 valves for each cylinder. DF40 and DF50 win the "Innovation Award" from the International Marine Trades Exposition and Convention (IMTEC), and it makes Suzuki the first manufacturer to receive this award two years in a row.



1990s - DF70



2000s - DF300



2010s - DF200AP



2003

DF200/225/250, the first Suzuki four stroke V6 outboards launched. DF250 wins the "IMTEC Innovation Award".

2008

New generation four stroke DF70A/80A/90A debut. DF90A is the lightest, most compact outboard in 66.2kW (90PS) four stroke class and is the first outboard to utilise Suzuki Lean Burn Technology.

2011

New DF300AP is the world's first Selective Rotation outboard. DF300AP wins the "2012 NMMA Award for Innovation".

2015

Launch of new DF200A/AP with world-leading keyless ignition technology

2000

DF90 and DF115 marketed. These models are the first to utilise an offset drive shaft, making them the most compact outboards in their class.

2006

DF300 is the industry's first 220.7kW (300PS) V6 four stroke outboard, and the first outboard to utilise an electronic remote control. DF300 is the winner, the IBEX 2006 Innovation Award from The National Marine Manufacturer's Association (NMMA).

2010

New DF40A/50A win the "2011 NMMA Award for Innovation".

2012

Introduction of new generation DF15A/20A, the world's first outboards to feature battery-less Fuel Injection in the 11.0kW (15PS)/14.7kW (20PS) class. Suzuki was honored to be chosen as the sole supplier of outboard motors to the London 2012 Olympic and Paralympic Games Sailing Regatta.



Dear Customer,

Quality. Dependability. Innovation. Everything that you expect from your outboard motors is delivered with style by SUZUKI.

Demand no less from the products that you choose to enhance your total boating pleasure. Demand GENUINE SUZUKI ACCESSORIES.

This catalogue represents our commitment to provide you with the finest products available. From our classic line of matching instruments and gauges to our custom-engineered propellers and rigging items, you can depend on GENUINE SUZUKI ACCESSORIES for optimum performance. Take a few minutes to browse through this catalogue, and then be sure to visit your AUTHORIZED SUZUKI DEALER for complete ordering information. Thank you.

SUZUKI MOTOR CORPORATION



MODEL NAME AND ENGINE NUMBER

NOTE : Items and their part numbers showing in this catalogue are basically applicable to models of following engine numbers. Please consult your local dealers regarding other models and their rigging-parts and accessories.

model	engine number	model	engine number	model	engine number	model	engine number	model	engine number	model	engine number
DF300AP	30002P-510001~	DF200AF	20003P-510001~	DF140AZ	14003Z-510001~	DF60A	06002F-510001~	DF9.9B	00995F-510001~	DT40W	04005-510001~
DF250AP	25003P-510001~	DF200T	20002F-510001~	DF115AT	11503F-510001~	DF50AV	05004F-510001~	DF9.9A	00994F-510001~	DT40WK	04005K-510001~
DF250T	25003F-510001~	DF200Z	20002Z-510001~	DF115AZ	11503Z-510001~	DF50A	05003F-510001~	DF8A	00801F-510001~	DT30	03005-510001~
DF250Z	25003Z-510001~	DF175T	17502F-510001~	DF100AT	10003F-510001~	DF40A	04003F-510001~	DF6	00602F-510001~	DT25K	02503K-510001~
DF225T	22503F-510001~	DF175Z	17502Z-510001~	DF90A	09003F-510001~	DF30A	03003F-510001~	DF5	00502F-510001~	DT15A	01504-510001~
DF225Z	22503Z-510001~	DF150T	15002F-510001~	DF80A	08002F-510001~	DF25A	02504F-510001~	DF4	00402F-510001~	DT15AK	01503K-510001~
DF200AT	20003F-510001~	DF150Z	15002Z-510001~	DF70A	07003F-510001~	DF20A	02002F-510001~	DF2.5	00252F-510001~	DT9.9A	00996-510001~
DF200AZ	20003Z-510001~	DF140AT	14003F-510001~	DF60AV	06003F-510001~	DF15A	01504F-510001~			DT9.9AK	00993K-510001~



TABLE OF CONTENTS

02	WELCOME TO THE 50TH ANNIVERSARY OF SUZUKI OUTBOARDS
06	NEW MULTI FUNCTION GAUGE
07	NEW SUZUKI KEYLESS START SYSTEM
08	SUZUKI MODULAR INSTRUMENT SYSTEM
10	COMPONENT OF SUZUKI MODULAR INSTRUMENT SYSTEM
12	CONNECTION FOR SUZUKI MODULAR INSTRUMENT SYSTEM
14	ANALOG INSTRUMENT
16	ELECTRONIC THROTTLE AND SHIFT SYSTEM
18	COMPONENT OF SUZUKI PRECISION CONTROL
20	MECHANICAL REMOTE CONTROL SYSTEM
22	COMPONENT OF MECHANICAL REMOTE CONTROL SYSTEM
24	STEERING
28	ELECTRICAL PARTS
29	ANODE / FUEL SYSTEM
32	PROPELLER
36	CARE & MAINTENANCE ITEM
38	APPLICATION CHART

REFERENCE

Part Number	15-digit alpha-numerical number shows Part Number to be used for ordering.
Gauge Size	Shows the size (2" or 4") of the gauge.
Background	Shows a main color of display panel on the front of a gauge.
Applicable Model	Shows typical or recommended models of ENGINES that RIGGING-PARTS and ACCESSORIES can be installed to.
Maximum Speed	Shows maximum speed that SPEEDOMETER displays.
kph	Kilometers Per Hour
mph	Miles Per Hour
knots	Knots

NEW MULTI FUNCTION GAUGE

MAIN FEATURES

HIGH PERFORMANCE

- Multi-function gauge displays a wide variety of information such as engine rpm, speed, trim angle, as well as diagnostics based on digital data received from the outboard motor.
- Gauges offer great reliability utilizing Suzuki's original warning system to provide the operator with accurate warning information.
- NMEA2000® terminal offers compatibility with a wide range of marine equipment by other manufacturers (pending).

SUPERIOR VISIBILITY

- First color LCD offered as genuine parts by an outboard manufacturer. Suzuki's next generation standard equipment gauge offers easy to use multi-function operation with superior readability.
- Easy to see, easy to read, easy to understand display offers a variety of modes including day and night modes and digital or analog readouts.

COMPACT

- Compact, highly versatile gauge requires an 85mm hole for mounting making them the perfect replacement for 4-inch analog gauges.

*1 4-inch gauges that require 85mm mounting holes (as researched by Suzuki).

*2 NMEA2000® is an NMEA (National Marine Electronics Association) standard communication protocol used for exchanging data between marine control units.

DISPLAY VARIATIONS



Analog All



Analog Speed (Night)



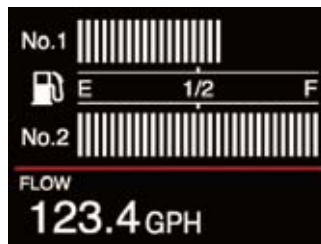
Analog Tacho



Digital All



Digital Tacho (Night)



Fuel

DESIGN



Analog/Day mode



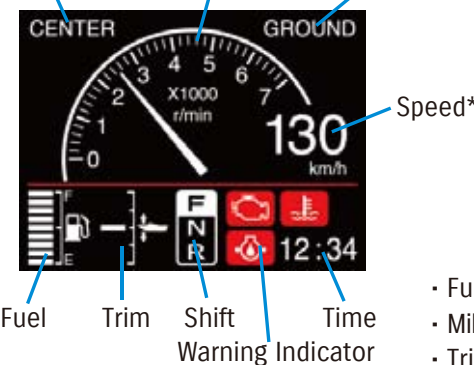
Digital/Night mode



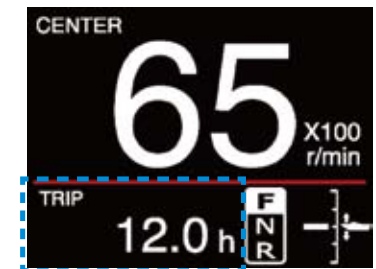
INFORMATION

Analog Tacho & Speed Mode

Engine position Engine rpm Ground or Water



Tacho Mode



- Fuel flow [l/h, gph] (instantaneous)
- Mileage [km/l, mpg] (instantaneous and average)
- Trip time [h], Trip distance [km, M, NM]
- Engine hour, Voltage, Water temp and more...

SPECIFICATIONS

- 3.5" Color display
- Size: 105mm(W)×105mm(H)×16mm(D)
- Diagnostic display
- Easy installation and setup
Φ85mm hole & large resin nut
- Includes protective cover
- NMEA2000 output (pending)
- Applicable models:
DF9.9B-DF300AP

* Speed sensor or GPS module will be required in order to display the speed.

* The NEW MULTI FUNCTION GAUGE is planned to be launched from the next spring.

· Design and specifications may change without notice due to improvements in performance and function.

NEW SUZUKI KEYLESS START SYSTEM

GENUINE RIGGING-PARTS AND ACCESSORIES

EASY OPERATION

- Suzuki original engine starting system offers a variety of functions. The key-fob is easy to carry and one is all you need to enjoy stress-free starts for greater boating pleasure.
- One step ahead of the competition, the Suzuki Keyless Start System requires no mechanical key so the key-fob remains safely in your pocket.

WATERPROOF FLOAT KEY-FOB

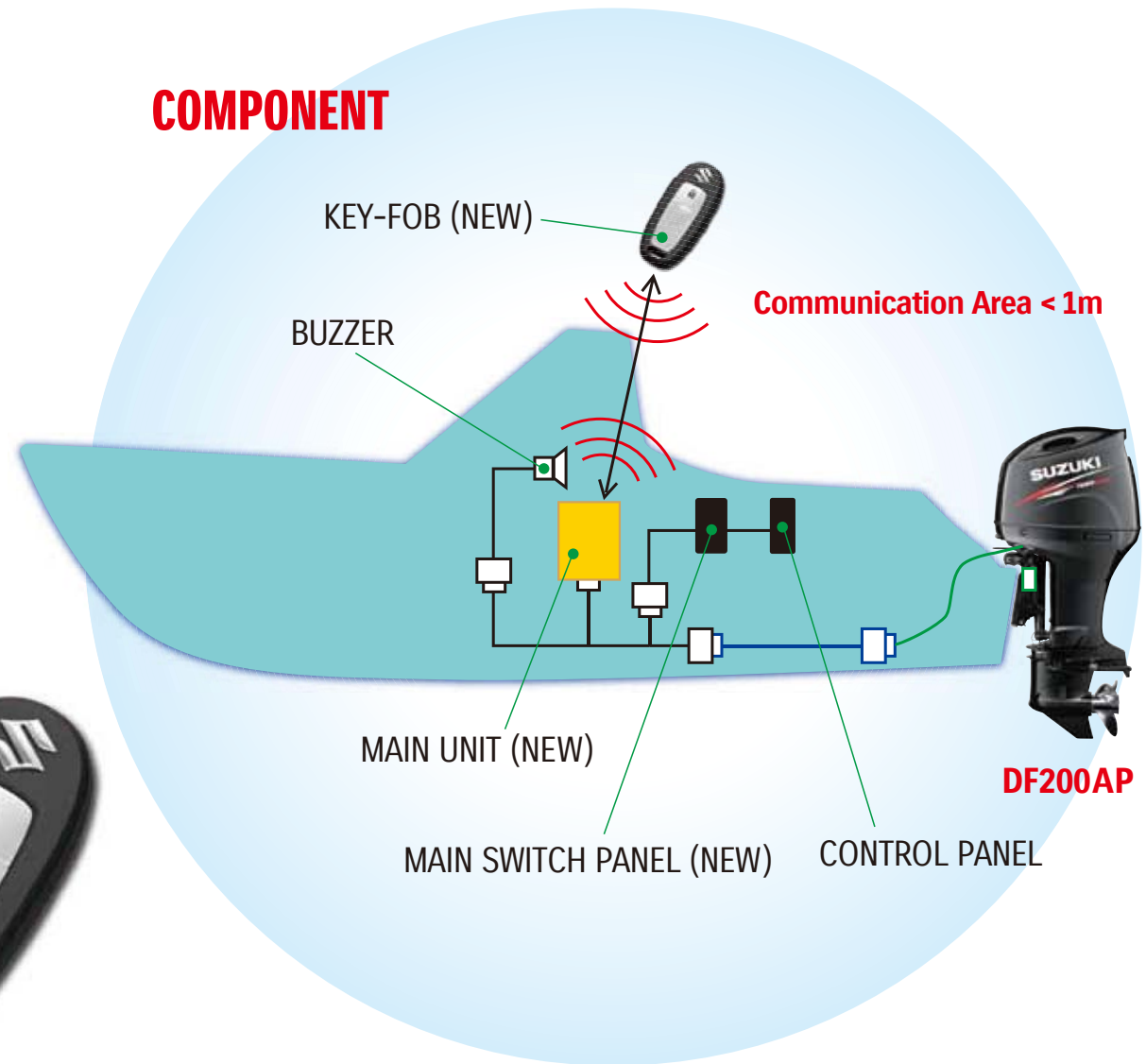
- The easy to carry key-fob remains safely in your pocket reducing risk of a lost key. The key-fob is waterproof and floats so should it ever go overboard it is retrievable.

HIGH SECURITY

- Suzuki's system features an immobilizer function for added peace of mind. IC access codes installed in the key-fob and engine must match for the engine to start. This prevents starting the engine with the wrong key making the system a good theft deterrent as well.



COMPONENT



*Availability may differ in some regions. Please contact your local Suzuki dealer for more information.

* The NEW SUZUKI KEYLESS START SYSTEM is planned to be launched from the next spring with DF200AP.

* Planning to apply to other models one after another.

· Design and specifications may change without notice due to improvements in performance and function.

SUZUKI MODULAR INSTRUMENT SYSTEM

SUZUKI MODULAR INSTRUMENT SYSTEM (S.M.I.S.) uses an easy to connect and expandable cable system to transmit graphic and numerical data to Multi-Function gauges. Easy to set up and install system can be used with nearly any boat and DF300 SUZUKI Outboard. Connected to the NMEA2000® compatible system, the gauges can display real-time readings from compatible electronic probes and the exclusive SMIS engine interface to monitor all engine functions. (Engine Monitor with 4" gauge only)

APPLICABLE MODELS : DF9.9B-DF300AP

SMIS MULTI-FUNCTION GAUGE

The 4" multi-function gauge uses a state-of-the-art high-contrast, dot matrix display to monitor real-time graphic and numerical digital data. When connected into the SMIS system, it can monitor all engine functions, act as a speedometer, tachometer, GPS*, and many others. (*GPS requires additional hardware.) The 2" multi-function gauge is capable of all functions of the 4" gauge except diagnostic informations. When connected to the SMIS system, it can be programmed to monitor all other functions.

4" SMIS MULTI-FUNCTION GAUGE



Quad analog page as a tachometer, a volt meter, a water-pressure gauge and a speedometer for single engine



34200-88L02-000 001

with a gray bezel + a T-connector (36664-88L00-000) + Operation & Installation Manual

Examples of display**



Engine trim page as a trim gauge for single engine



Single analog page as a speedometer



Dual digital page as a hour meter and a speedometer for single engine



Single analog page as a tachometer for single engine



Fuel manager page as a fuel gauge



Diagnostics page

2" SMIS MULTI-FUNCTION GAUGE



Fuel manager page



34800-88L01-000 002

with a gray bezel + a T-connector (36664-88L00-000) + Operation & Installation Manual

Examples of display**



as a volt meter for single engine



Engine trim page as a trim gauge for single engine



Fuel manager page

** The detail instructions of display-operation are explained in the Operation & Installation Manual.

GAUGE KIT

4" GAUGE KIT



34011-88L04-000 003

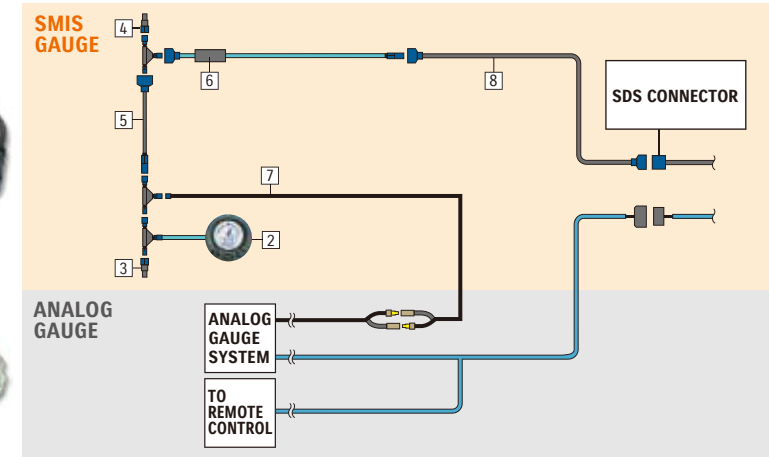
This kit contains basic components to install digital gauge.

2" GAUGE KIT



34011-88L14-000 004
34011-89L02-000

This kit supplements analog gauges to display additional information, and it can display information which analog gauge system cannot indicate such as fuel consumption. 34011-89L02-000 is for DF9.9B/15A/20A/25A/30A, and includes 36660-89L01-000 instead of 36668-88L00-000.



Available for your convenience. Refer to the following chart for the contents.

Contents		quantity			
part name	part number	4" Gauge Kit 34011-88L04-000 003		2" Gauge Kit 34011-88L14-000 004 34011-89L02-000	
			***		***
1	4" SMIS Multi-Function Gauge	34200-88L02-000 001	1	1	-
2	2" SMIS Multi-Function Gauge	34800-88L01-000 002	-	-	1
3	Terminator Female	36665-88L00-000 011	1	-	-
4	Terminator Male	36665-88L10-000 012	1	-	-
5	Extension Cable 25 feet	36662-88L00-000	-	-	1
6	Engine Interface Unit	34922-88L03-000 005	1	1	1
7	SMIS Power Cable	36663-88L00-000 008	1	1	1
8	SMIS Adapter	36668-88L00-000 006 OR 36660-89L01-000	-	-	1
9	Operation & Installation Manual for 4" Gauge		1	-	-
10	Operation & Installation Manual for 2" Gauge		-	-	1

***Quantity of T-connector(s) in a kit

OPTIONAL INSTRUMENT TRIM

Change the standard gray bezel to suit your application. Two different bezel finishes are available for 2" or 4" Multi-Function gauges.



The image shows 4" bezel, "chrome", 34193-88L00-000.



4" bezel, chrome
34193-88L00-000

	Chrome	White
4" bezel	34193-88L00-000	34193-88L20-000
2" bezel	34193-88L40-000	34193-88L60-000

COMPONENT OF SUZUKI MODULAR INSTRUMENT SYSTEM

ENGINE INTERFACE The most important part of the SMS data system. DF150TG/ZG/175TG/ZG/200AP/250AP/300AP connect to the system, using Engine Interface Adapter.

ENGINE INTERFACE UNIT WITH A T-CONNECTOR



34922-88L03-000 005

SMIS ADAPTER



36668-88L00-000 006
for DF40A-250 with analog gauge system to add on digital gauges.1.8m

ENGINE INTERFACE ADAPTER



36661-98J10-000 007
for single DF150TG/ZG/175TG/ZG/200AP/250AP/300AP

36660-89L00-000
for DF9.9B/15A/20A/25A/30A with analog gauge system to add on digital gauges.7.1m

36661-98J20-000
for dual DF150TG/ZG/175TG/ZG/200AP/250AP/300AP

36661-98J30-000
for triple DF150TG/ZG/175TG/ZG/200AP/250AP/300AP

POWER CABLE The fused (3A) lead connects the extension cable to the power source.

SMIS POWER CABLE WITH A T-CONNECTOR



36663-88L00-000 008

POWER NODE WITH A T-CONNECTOR



36663-88L10-000 009
Allows network to be powered from multiple power sources (key switch, accessory switch, etc...).
For multiple (2 or 3) engines of DF9.9B-250

CONNECTION HARDWARE

T-CONNECTOR



36664-88L00-000 010
T-connectors link all compatible cables, data and sensor devices, and can be easily secured.

TERMINATOR FEMALE



36665-88L00-000 011
120-ohm terminators are required for any open cable ends in the system.

TERMINATOR MALE



36665-88L10-000 012
120-ohm terminators are required for any open cable ends in the system.

ADAPTER HARNESS TO N NETWORK



36666-88L00-000 013
(Black network to Blue devices)
Allows connection to other NMEA devices (Device NET).

ADAPTER HARNESS TO L NETWORK



36666-88L10-000 014
(Blue network to Black devices)

SENSORS

FLUID LEVEL SENSOR WITH A T-CONNECTOR



34810-88L00-000 015

Monitors the fluid levels such as fuel, live well water level, etc. 10ft cable.

SPEED SENSOR WITH A T-CONNECTOR



34190-88L00-000 016

Paddle wheel-type speed sensor. 10ft cable.

WATER PRESSURE SENSOR WITH A T-CONNECTOR



34960-88L00-000 017

WATER TEMPERATURE SENSOR WITH A T-CONNECTOR



34455-88L00-000 018

Surface-water temperature sensor. 10ft cable.

34455-88L10-000

(Thru-Hull type)

GPS RECEIVER MODULE WITH A T-CONNECTOR



39950-88L00-000 019

Displays the accurate location and speed on multi-function gauges.

CONNECTION CABLE

The extension cable is the main line of SMIS. Data communication runs the length of the boat, capped at each end with a 120-ohm terminator. NMEA2000® compatible sensors or other devices can be added by the use of T-connectors throughout the system.

EXTENSION CABLE

36662-88L10-000

2 feet

36662-88L30-000

15 feet

36662-88L20-000 020

6 feet

36662-88L00-000

25 feet



CONNECTION FOR SUZUKI MODULAR INSTRUMENT SYSTEM

Example of Connection for DF150TG/ZG/175TG/ZG/200AP/250AP/300AP with S.M.I.S. Gauge

(in case of equipping the same quantities of 4" and 2" gauges as engines and stations, and all optional items)

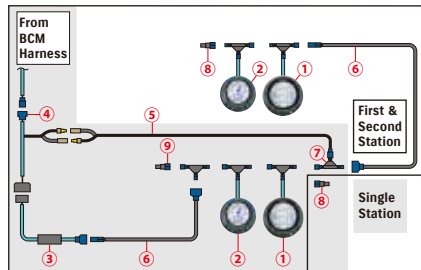
NOTE: (*1): The required or recommended quantities are shown. Numbers in round-parentheses show the required ones if equipped.

(*2): While some of SMS items have a T-connector in the package, the total number of the T-connectors enclosed in them may be short to the required quantity.

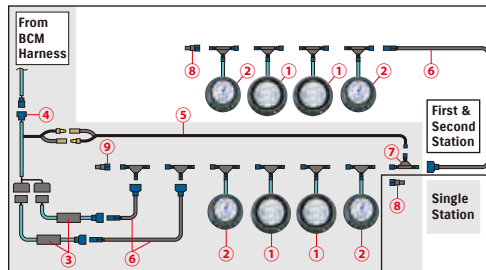
(*3): SMS adapter is required only for DF9.9B/15A/20A and DF25A/30A.

category	Ref. #	part name	Number of T-connector Included	Contents of Gauge Kit		engine(s)											part number		
				4"	2"	1			2			3							
						station(s)													
				1	1	1	2 total		2 total		2 total		1st	2nd					
						required quantity per boat (*1)													
SMIS multi-function gauge	①	4" SMIS Multi-Function Gauge with a gray bezel	1	1		1	2	3	2	1	1	4	2	2	6	3	3	34200-88L02-000	
		4" Gauge Kit	3															34011-88L04-000	
engine interface	②	2" SMIS Multi-Function Gauge with a gray bezel	1		1	1	2	3	2	1	1	4	2	2	6	3	3	34800-88L01-000	
		③	Engine Interface unit	1	1	1	1	1	1	1	1	1	1	1	1	1	1	1	34922-88L03-000
		④	Engine Interface Adapter for single	0															36661-98J10-000
power cable	⑤	Engine Interface Adapter for dual	0															36661-98J20-000	
		Engine Interface Adapter for triple	0															36661-98J30-000	
		Power Cable	1	1	1	1	1	1	1	1	1	1	1	1	1	1	1	36663-88L00-000	
connection cable	⑥	Extension Cable 2 feet	0															36662-88L10-000	
		Extension Cable 6 feet	0															36662-88L20-000	
		Extension Cable 15 feet	0															36662-88L30-000	
		Extension Cable 25 feet	0	0	1													36662-88L00-000	
connection hardware	⑦	T-Connector (*2)	1	3	3	4 (*2)	7 (*2)	10 (*2)	6 (*2)	4	2	11 (*2)	7	4	16 (*2)	10	6	36664-88L00-000	
		⑧	Terminator Female	0	1	1	1	1	1	1	1	1	1	1	1	1	1	1	36665-88L00-000
		⑨	Terminator Male	0	1	1	1	1	1	1	1	1	1	1	1	1	1	1	36665-88L10-000
		Adapter Harness to N network (Black network to Blue devices)	0																36666-88L00-000
		Adapter Harness to L network (Blue network to Black devices)	0																36666-88L10-000
sensor		Fluid Level Sensor	1			(1)	(1)	(1)	(1)			(1)			(1)			34810-88L00-000	
		Speed Sensor	1			(1)	(1)	(1)	(1)			(1)			(1)			34190-88L00-000	
		Water Temperature Sensor	1			(1)	(1)	(1)	(1)			(1)			(1)			34455-88L00-000	
		Water Temperature Sensor (Thru-Hull type)	1			(1)	(1)	(1)	(1)			(1)			(1)			34455-88L10-000	
		Water Pressure Sensor	1			(1)	(1)	(1)	(1)			(1)			(1)			34960-88L00-000	
optional trim		GPS Receiver Module	1			(1)	(1)	(1)	(1)			(1)			(1)			39950-88L00-000	
		4" bezel, chrome	0															34193-88L00-000	
		4" bezel, white	0															34193-88L20-000	
		2" bezel, chrome	0															34193-88L40-000	
2" bezel, white	0															34193-88L60-000			

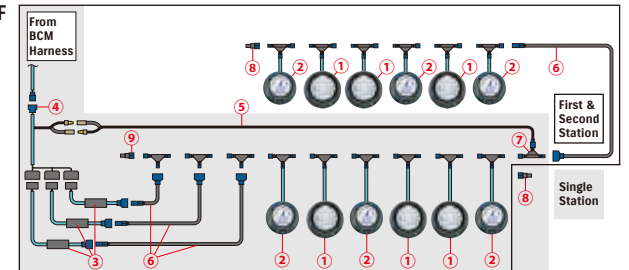
SINGLE ENGINE
DF150TG/ZG/
175TG/ZG/
200AP/250AP/
300AP



DUAL ENGINE OF
DF150TG/ZG/
175TG/ZG/
200AP/250AP/
300AP



TRIPLE ENGINE OF
DF150TG/ZG/
175TG/ZG/
200AP/250AP/
300AP

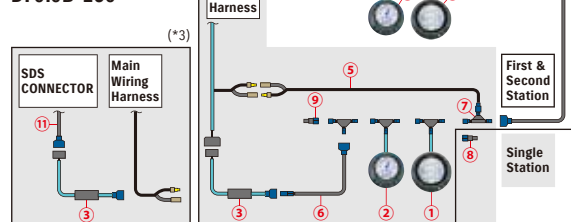


Example of Connection for DF9.9B-250 with S.M.I.S. Gauge

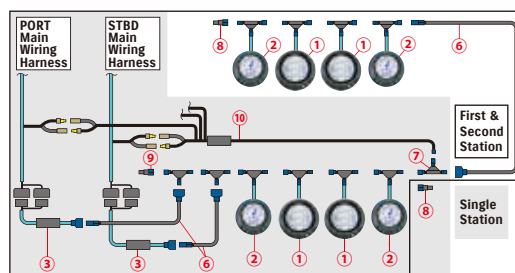
(in case of equipping the same quantities of 4" and 2" gauges as engines' and stations', and all optional items)

category	Ref. #	part name	Number of T-connector Included	Contents of Gauge Kit		engine(s)											part number				
						1			2			3									
						station(s)		1		2		3									
						1		1		1		2		2		2					
						required quantity per boat (*1)															
						4"		2"		1st		2nd		total		1st		2nd		total	
SMIS multi-function gauge	①	4" SMIS Multi-Function Gauge with a gray bezel	1	1		1	2	3	2	1	1	4	2	2	6	3	3	34200-88L02-000			
		4" Gauge Kit	3	KIT														34011-88L04-000			
	②	2" SMIS Multi-Function Gauge with a gray bezel	1		1	1	2	3	2	1	1	4	2	2	6	3	3	34800-88L01-000			
engine interface	③	Engine Interface unit	1	1	1	1	2	3	1	1	2	2		3	3		34922-88L03-000				
power cable	⑤	Power Cable	1	1	1	1	1	1	1	1	1	1	1	1	1	1	1	36663-88L00-000			
		Power Node for multiple engine of DF40-250 only	1															36663-88L10-000			
connection cable	⑥	Extension Cable 2 feet	0															36662-88L10-000			
		Extension Cable 6 feet	0															36662-88L20-000			
		Extension Cable 15 feet	0															36662-88L30-000			
		Extension Cable 25 feet	0	0	1													36662-88L00-000			
connection hardware	⑦	T-Connector (*2)	1	3	3	4 (*2)	7 (*2)	10 (*2)	6 (*2)	4	2	11 (*2)	7	4	16 (*2)	10	6	36664-88L00-000			
		Terminator Female	0	1	1	1	1	1	1	1	1	1	1	1	1	1	1	36665-88L00-000			
		Terminator Male	0	1	1	1	1	1	1	1	1	1	1	1	1	1	1	36665-88L10-000			
		Adapter Harness to N network (Black network to Blue devices)	0															36666-88L00-000			
		Adapter Harness to L network (Blue network to Black devices)	0															36666-88L10-000			
sensor		Fluid Level Sensor	1			(1)	(1)	(1)	(1)			(1)			(1)			34810-88L00-000			
		Speed Sensor	1			(1)	(1)	(1)	(1)			(1)			(1)			34190-88L00-000			
		Water Temperature Sensor	1			(1)	(1)	(1)	(1)			(1)			(1)			34455-88L00-000			
		Water Temperature Sensor (Thru-Hull type)	1			(1)	(1)	(1)	(1)			(1)			(1)			34455-88L10-000			
		Water Pressure Sensor	1			(1)	(1)	(1)	(1)			(1)			(1)			34960-88L00-000			
		GPS Receiver Module	1			(1)	(1)	(1)	(1)			(1)			(1)			39950-88L00-000			
optional trim		4" bezel, chrome	0															34193-88L00-000			
		4" bezel, white	0															34193-88L20-000			
		2" bezel, chrome	0															34193-88L40-000			
		2" bezel, white	0															34193-88L60-000			
adapter cable	⑪	SMIS adapter (*3)	0			1	2	3	1	1	2	2		3	3		36660-89L01-000				

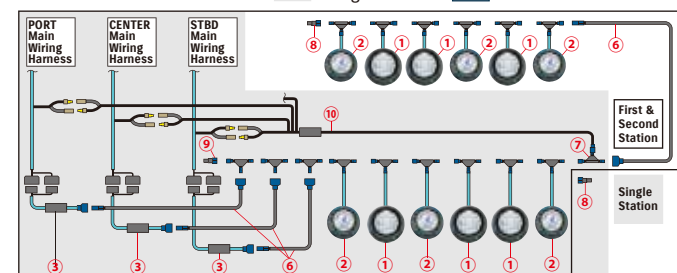
SINGLE ENGINE OF DF9.9B-250



DUAL ENGINE OF DF9.9B-250



TRIPLE ENGINE OF DF9.9B-250



Legend: : Single Station : First & Second Station

ANALOG INSTRUMENT

Caution lamp	Caution type
CHECK ENGINE	Low battery-voltage or Other cautions on S.D.S
TEMP	Overheat (Over-revolution)

Caution lamp	Caution type
OIL	Low oil-pressure (Over-revolution)
REV LIMIT	Oil change reminder
	Over-revolution

TACHOMETER



White



Black

34200-93J12-000 (White) 021 34200-93J00-000 (Black) 022

Gauge Size 4"

Applicable Model DF25A-250

Caution systems alert with a monitor lamp lighting on when an abnormal engine condition occurs. Refer to SERVICE MANUAL for the detail.



White



Black

34200-93J51-000 (White) 023 34200-93J40-000 (Black) 024

Gauge Size 4"

Applicable Model DF40A-140/200A

Exclusive for SUZUKI Troll Mode System. Automatically switches to low RPM scale when the SUZUKI Troll Mode System is activated.



White



Black

34200-93J32-000 (White) 025 34200-93J20-000 (Black) 026

Gauge Size 4"

Applicable Model DF8-30A, DT30/40W

Full-scale 7000-RPM TACHOMETER can be used on electric-start models by using 4, 6 or 12 pole switch on rear of meter.

TRIM GAUGE



White



Black

34800-93J11-000 (White) 027
34800-93J00-000 (Black) 028

Gauge Size 2"

Applicable Model DF25A-250

Magnetic-type gauge shows trim angle for optimum performance and efficiency.

FUEL GAUGE



White



Black

34300-93J11-000 (White) 029
34300-93J00-000 (Black) 030

Gauge Size 2"

Applicable Model DF8A-250, DT30/40

FUEL GAUGE alone works with the US Standard 250Q sending unit. Use the 150Q adaptor to connect the gauge to a European standard sending unit.

HOUR METER



White



Black

34500-93J11-000 (White) 031
34500-93J00-000 (Black) 032

Gauge Size 2"

Applicable Model DF8A-250, DT30/40

12-volt-electric-motor-driven meter indicates hours that your outboard motor has been operated in order for you to know when each periodic service is required.

VOLTMETER



White



Black

34600-93J11-000 (White) 033
34600-93J00-000 (Black) 034

Gauge Size 2"

Applicable Model DF8A-250, DT30/40

To help your SUZUKI OUTBOARD MOTOR run at its best, monitor the charging system functioning with a VOLTMETER.

WATER-PRESSURE GAUGE



White



Black

34650-93J31-000 (White) 035
34650-93J20-000 (Black) 036

Gauge Size 2"

Applicable Model DF40A-250

Bourdon-tube type gauge measures cooling-water pressure. Select an appropriate INSTALLATION KIT for each model.

SPEEDOMETER



White

34100-93J11-000 ^(White) 037

Gauge Size 4"

Maximum Speed 130km/h, 80mph

Bourdon-tube type speedometer with readings in km/h and mph. Includes vinyl tube, hardware and installation manual.



Black

34100-93J00-000 ^(Black) 038



White

34100-93J31-000 ^(White) 039

Gauge Size 4"

Maximum Speed 80km/h, 50mph

Bourdon-tube type speedometer with readings in km/h and mph. Includes vinyl tube, hardware and installation manual.



Black

34100-93J20-000 ^(Black) 040



White

34100-93J51-000 ^(White) 041

Gauge Size 4"

Maximum Speed 80km/h, 45knots

Bourdon-tube type speedometer with readings in km/h and mph. Includes vinyl tube, hardware and installation manual.



Black

34100-93J40-000 ^(Black) 042



34100-93J60-000 043

Gauge Size 4"

Background White

Maximum Speed 120km/h, 65knots

Bourdon-tube type speedometer with readings in km/h and knots. Includes vinyl tube, hardware and installation manual.

SPEEDOMETER SENDER ASSY



34190-95500-000 044



34190-87D00-000 045

INSTALLATION KIT for WATER-PRESSURE GAUGE



34660-90J02-000

Applicable Model DF40A-140A

34660-93J00-000 046

Applicable Model DF200-250

KIT includes fittings and hoses needed for motor to gauge connection.

34660-96J00-000

Applicable Model DF150-175/200A

ELECTRONIC THROTTLE AND SHIFT SYSTEM

- Computerized Drive by Wire system of the Suzuki Precision Control (S.P.C.) eliminates wiring friction losses and allows smooth and superior handling. As a result, SPC makes smooth and linear control from start and at low speed.
- By the control panel operation (included remote-control kits), you can start and stop the engine and change a steering station with multiple engines you can control the synchronization of an engine rev and change the tilt angles.
- Not only DF300AP/250AP/200AP, but also DF150TG/ZG, DF175TG/ZG are suitable for this system.
- Chrome plating finish for better rust resistance.
- applicable to maximum 2 station and maximum 4 engines.
- 8 kinds of rigging parts kits are available for your convenience to select all necessary parts for your requirements.



67200-98J03-000
BINNACLE MOUNT R/C BOX
for SINGLE ENGINE **047**



67200-98J22-000
FLUSH MOUNT R/C BOX
for SINGLE ENGINE **048**



67200-98J13-000
BINNACLE MOUNT R/C BOX
for DUAL ENGINE **049**

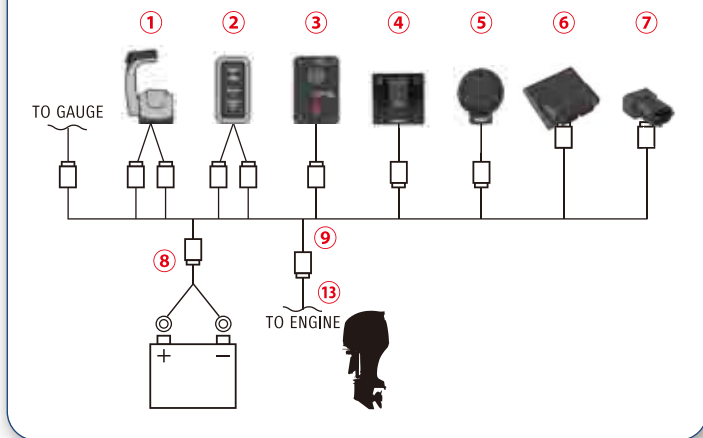
REMOTE-CONTROL KIT for SINGLE ENGINE				KIT			Total Required Quantity	
				1st Station	2nd Station			
				67000-98J09-000 BINNACLE-MOUNT CONTROL KIT	67000-98J68-000 FLUSH-MOUNT CONTROL KIT	67000-98J19-000 2ND-STATION CONTROL KIT	SINGLE STATION	DUAL STATION
PART NUMBER	PART NAME	LENGTH						
① 67200-98J03-000 047	BINNACLE MOUNT R/C BOX		1	—	1	1	2	
67200-98J22-000 048	FLUSH MOUNT R/C BOX		—	1	—			
② 37100-98J11-000 051	CONTROL PANEL		1	1	1	1	2	
③ 37100-98J04-000 050	MAIN SWITCH PANEL		1	1	—	1	1	
④ 37860-87L00-000 080	TROLL MODE SWITCH PANEL		1	1	1	1	2	
⑤ 38500-93J90-000 082	WARNING BUZZER		1	1	1	1	2	
09407-08401-000	WARNING-BUZZER CLAMP		1	1	1	1	2	
36770-98J10-000 054	BOAT CONTROL MODULE		1	1	1	1	2	
36775-98J00-000 055	BCM HOLDER (L)		1	1	1	1	2	
⑥ 36776-98J00-000 056	BCM HOLDER (R)		1	1	1	1	2	
33911-88BLO-000 057	BCM-CONNECT CAP		1	1	1	1	2	
33925-93J00-000 058	BCM CUSHION		1	1	1	1	2	
⑦ 33926-98J00-000 064	TERMINAL RESISTOR		2	2	—	2	2	
⑧ 36625-98J10-000 063	BATTERY-LEAD		1	1	—	1	1	
⑨ 36623-98J20-000 065	BCM #1 WIRING HARNESS		1	1	—	1	1	
⑩ 36622-98J00-000 062	DUAL-STATION WIRING HARNESS		—	—	1	—	1	
⑪ 36624-98J02-000 066	BCM #2 WIRING HARNESS		—	—	1	—	1	
⑫ 37803-93J04-000 076	EMERGENCY SWITCH PANEL		—	—	1	—	1	
— 09403-13402-000	HARNESS CLAMP		10	10	10	—	—	
* ⑬ 36620-98J30-000 059	MAIN WIRING HARNESS	6.5m				1	2	
36620-98J40-000		9.5m						
36620-98J50-000 060	MAIN WIRING HARNESS EXTENSION	2.0m				—	—	

*⑬ is not included these kits. Please purchase these items separately

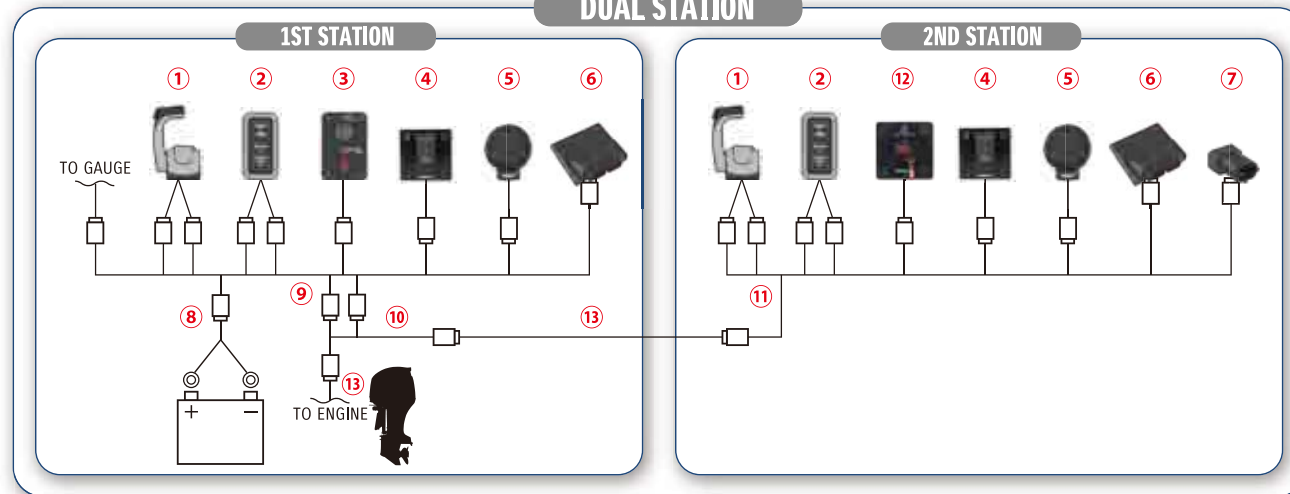
REMOTE-CONTROL KIT for DUAL ENGINE				KIT		Total Required Quantity	
				1st Station	2nd Station		
				67000-98J29-000 BINNACLE-MOUNT CONTROL KIT	67000-98J39-000 2ND-STATION CONTROL KIT	SINGLE STATION	DUAL STATION
PART NUMBER	PART NAME	LENGTH					
① 67200-98J13-000 049	BINNACLE MOUNT R/C BOX		1	1	1	2	
② 37100-98J21-000 052	CONTROL PANEL		1	1	1	2	
③ 37100-98J04-000 050	MAIN SWITCH PANEL		1	1	1	1	
④ 37860-87L00-000 080	TROLL MODE SWITCH PANEL		1	1	1	2	
⑤ 38500-93J90-000 082	WARNING BUZZER		1	1	1	2	
09407-08401-000	WARNING-BUZZER CLAMP		1	1	1	2	
36770-98J10-000 054	BOAT CONTROL MODULE		1	1	1	2	
36775-98J00-000 055	BCM HOLDER (L)		1	1	1	2	
⑥ 36776-98J00-000 056	BCM HOLDER (R)		1	1	1	2	
33911-88BLO-000 057	BCM-CONNECT CAP		1	1	1	2	
33925-93J00-000 058	BCM CUSHION		1	1	1	2	
⑦ 33926-98J00-000 064	TERMINAL RESISTOR		2	—	2	2	
⑧ 36625-98J10-000 063	BATTERY-LEAD		1	—	1	1	
⑨ 36623-98J30-000	BCM #1 WIRING HARNESS		1	—	1	1	
⑩ 36622-98J00-000 062	DUAL-STATION WIRING HARNESS		—	1	—	1	
⑪ 36624-98J11-000	BCM #2 WIRING HARNESS		—	1	—	1	
⑫ 37803-93J04-000 076	EMERGENCY SWITCH PANEL		—	1	—	1	
— 36621-98J00-000 061	ENGINE WIRING HARNESS		1	—	1	1	
— 09403-13402-000	HARNESS CLAMP		15	10	—	—	
* ⑬ 36620-98J30-000 059	MAIN WIRING HARNESS	6.5m				1	2
36620-98J40-000		9.5m					
36620-98J50-000 060	MAIN WIRING HARNESS EXTENSION	2.0m				—	—

*⑬ is not included these kits. Please purchase these items separately

SINGLE STATION



DUAL STATION



REMOTE-CONTROL KIT for TRIPLE ENGINE

	PART NUMBER	PART NAME	LENGTH	KIT		Total Required Quantity	
				1st Station 67000-98J49-000 BINNACLE-MOUNT OR FLUSH-MOUNT CONTROL KIT	2nd Station 67000-98J59-000 2ND-STATION CONTROL KIT	SINGLE STATION	DUAL STATION
①	67200-98J13-000	049 BINNACLE MOUNT R/C BOX		1	1	1	2
②	37100-98J31-000	053 CONTROL PANEL		1	1	1	2
③	37100-98J04-000	050 MAIN SWITCH PANEL		1	-	1	1
④	37860-87L00-000	080 TROLL MODE SWITCH PANEL		1	1	1	2
⑤	38500-93J90-000	082 WARNING BUZZER		1	1	1	2
	09407-08401-000	WARNING-BUZZER CLAMP		1	1	1	2
	36770-98J10-000	054 BOAT CONTROL MODULE		1	1	1	2
	36775-98J00-000	055 BCM HOLDER (L)		1	1	1	2
⑥	36776-98J00-000	056 BCM HOLDER (R)		1	1	1	2
	33911-88BL0-000	057 BCM-CONNECT CAP		1	1	1	2
	33925-93J00-000	058 BCM CUSHION		1	1	1	2
⑦	33926-98J00-000	064 TERMINAL RESISTOR		2	-	2	2
⑧	36625-98J10-000	063 BATTERY-LEAD		1	-	1	1
⑨	36623-98J30-000	BCM #1 WIRING HARNESS		1	-	1	1
⑩	36622-98J00-000	062 DUAL-STATION WIRING HARNESS		-	1	-	1
⑪	36624-98J11-000	BCM #2 WIRING HARNESS		-	1	-	1
⑫	37803-93J04-000	076 EMERGENCY SWITCH PANEL		-	1	-	1
-	36621-98J00-000	061 ENGINE WIRING HARNESS		1	-	1	1
-	09403-13402-000	HARNESS CLAMP		18	10	-	-
*⑬	36620-98J30-000	059 MAIN WIRING HARNESS	6.5m			1	2
	36620-98J40-000	9.5m					
	36620-98J50-000	060 MAIN WIRING HARNESS EXTENSION	2.0m			-	-

*⑬ is not included these kits. Please purchase these items separately

REMOTE-CONTROL KIT for QUADRUPLE ENGINE

	PART NUMBER	PART NAME	LENGTH	KIT		Total Required Quantity	
				1st Station 67000-98J71-000 BINNACLE-MOUNT OR FLUSH-MOUNT CONTROL KIT	2nd Station 67000-98J81-000 2ND-STATION CONTROL KIT	SINGLE STATION	DUAL STATION
①	67200-98J13-000	049 BINNACLE MOUNT R/C BOX		1	1	1	2
②	37100-98J21-000	052 CONTROL PANEL		2	2	2	4
③	37100-98J04-000	050 MAIN SWITCH PANEL		1	-	1	1
④	37860-87L00-000	080 TROLL MODE SWITCH PANEL		1	1	1	2
⑤	38500-93J90-000	082 WARNING BUZZER		2	2	2	4
	09407-08401-000	WARNING-BUZZER CLAMP		2	2	2	4
	36770-98J20-000	BOAT CONTROL MODULE		2	2	2	4
	36775-98J00-000	055 BCM HOLDER (L)		2	2	2	4
⑥	36776-98J00-000	056 BCM HOLDER (R)		2	2	2	4
	33911-88BL0-000	057 BCM-CONNECT CAP		2	2	2	4
	33925-93J00-000	058 BCM CUSHION		2	2	2	4
⑦	33926-98J00-000	064 TERMINAL RESISTOR		4	-	4	4
⑧	36625-98J10-000	063 BATTERY-LEAD		2	-	2	2
⑨	36623-98J40-000	BCM #1 WIRING HARNESS		1	-	1	1
⑩	36622-98J00-000	062 DUAL-STATION WIRING HARNESS		-	2	-	2
⑪	36623-98J40-000	BCM #2 WIRING HARNESS		-	1	-	1
⑫	37803-93J04-000	076 EMERGENCY SWITCH PANEL		-	1	-	1
-	36621-98J00-000	061 ENGINE WIRING HARNESS		2	-	2	2
-	09403-13402-000	HARNESS CLAMP		20	15	-	-
*⑬	36620-98J30-000	059 MAIN WIRING HARNESS	6.5m			2	4
	36620-98J40-000	9.5m					
	36620-98J50-000	060 MAIN WIRING HARNESS EXTENSION	2.0m			-	-

*⑬ is not included these kits. Please purchase these items separately

COMPONENT OF SUZUKI PRECISION CONTROL

Applicable model
DF150TG/ZG/175TG/ZG/200AP/250AP/300AP

MAIN SWITCH PANEL



37100-98J04-000 050
Single ignition with Emergency-stop switch

CONTROL PANEL



37100-98J11-000 051
for Single-Engine



37100-98J21-000 052
for Dual-Engine



37100-98J31-000 053
for Triple-Engine

BOAT CONTROL MODULE (BCM)



36770-98J10-000 054

36770-98J20-000
for Quadruple engines

BCM HOLDER (L/R)



36775-98J00-000 055

36776-98J00-000 056

BCM-CONNECT CAP



33911-88BLO-000 057

BCM CUSHION



33925-93J00-000 058

MAIN WIRING HARNESS



36620-98J30-000 059
6.5 meters for control system

MAIN-WIRING-HARNESS EXTENSION



36620-98J50-000 060
2.0 meters for control system

ENGINE WIRING HARNESS



36621-98J00-000 061
for Dual engines

DUAL-STATION WIRING HARNESS



36622-98J00-000 062
for Dual-station control system

BATTERY LEAD



36625-98J10-000 063
6.5 meters

36620-98J40-000
9.5 meters for control system

36621-98J10-000
for Triple engines

TERMINAL RESISTOR



33926-98J00-000 064

BCM #1 WIRING HARNESS



36623-98J20-000 065
for Single engine and Single (First) station

36623-98J30-000
for Dual or Triple engines and Single (First) station

36623-98J40-000
for Quadruple engines

BCM #2 WIRING HARNESS



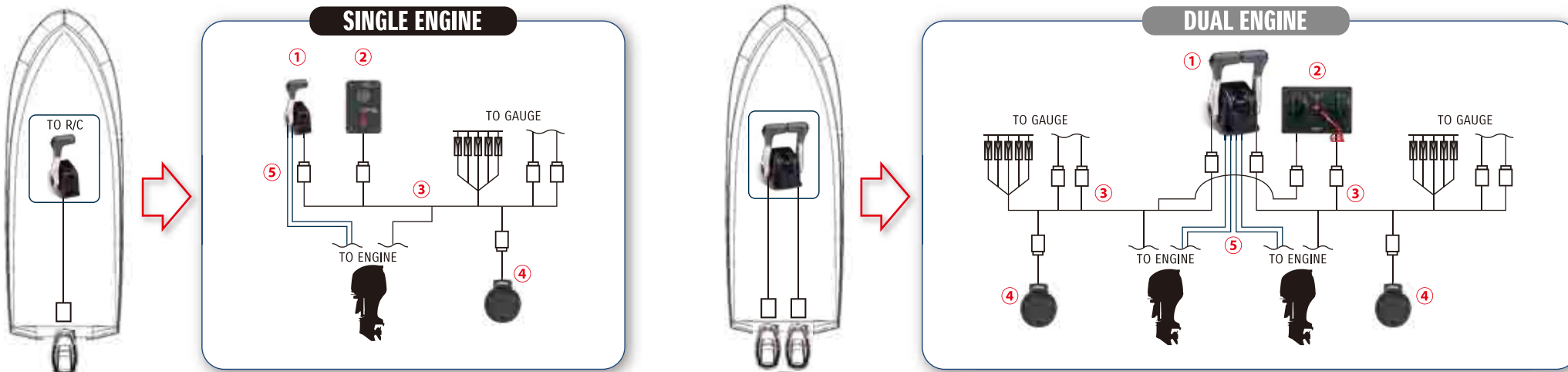
36624-98J02-000 066
for Single engine and Second station

36624-98J11-000
for Dual or Triple engines and Second station

36623-98J40-000
for Quadruple engines and Second station



MECHANICAL REMOTE CONTROL SYSTEM



REMOTE-CONTROL KIT for SINGLE ENGINE + SINGLE STATION				KIT					Total Required Quantity
PART NUMBER	PART NAME	LENGTH	1st Station	1st Station	1st Station	1st Station	1st Station		
			67000-93J05-000 BINNACLE-MOUNT CONTROL KIT	67000-93J49-000 BINNACLE-MOUNT CONTROL KIT	67000-93J26-000 FLUSH-MOUNT CONTROL KIT	67000-93J90-000 FLUSH-MOUNT CONTROL KIT	67000-93J80-000 SIDE-MOUNT CONTROL KIT		
① 67200-93J13-000 067	BINNACLE MOUNT R/C BOX		1	1	—	—	—	1	
67200-93J32-000 069	FLUSH MOUNT R/C BOX		—	—	1	1	—		
67200-93J50-000	SIDE MOUNT R/C BOX		—	—	—	—	1		
37803-93J04-000 076	EMERGENCY SWITCH PANEL		—	—	—	—	—	1	
② 37803-99E04-000	EMERGENCY SWITCH PANEL		—	—	—	—	—		
37100-96J00-000 075	IGNITION SWITCH PANEL		—	—	—	—	—		
37100-96J24-000 077	SINGLE IGNITION WITH E/S SWITCH		1	1	1	1	※1		
36620-93J02-000 073	MAIN WIRING HARNESS	5.0m	—	1	—	1	1		1
36620-93J52-000		6.5m	—	—	—	—	—		
36620-93J62-000		8.0m	—	—	—	—	—		
36620-94J01-000		6.5m	—	—	—	—	—		
34200-93J12-000 021	TACHOMETER (FACE : WHITE)		—	1	—	1	1	1	
34800-93J11-000 027	TRIM GAUGE (FACE : WHITE)		—	1	—	1	1		
④ 38500-93J90-000 082	WARNING BUZZER		—	—	—	—	※1	1	
09407-08401-000	WARNING-BUZZER CLAMP		—	—	—	—	※1	1	
67320-93J00-000 084	R/C CABLE (FOR THROTTLE AND SHIFT CABLES)	8ft. / 2.44m	—	—	—	—	—	2	
67320-93J10-000		10ft. / 3.05m	—	—	—	—	—		
67320-93J20-000		12ft. / 3.66m	—	—	—	—	—		
67320-93J30-000		14ft. / 4.27m	—	—	—	—	—		
⑤ 67320-93J40-000		16ft. / 4.88m	—	—	—	—	—		
67320-93J50-000		18ft. / 5.49m	—	—	—	—	—		
67320-93J60-000		20ft. / 6.10m	—	—	—	—	—		
67320-93J70-000		22ft. / 6.71m	—	—	—	—	—		
67320-93J80-000	24ft. / 7.32m	—	—	—	—	—			
36620-93J10-000	MAIN WIRING HARNESS EXTENSION	2m	—	—	—	—	—	1	
36620-93J40-000		3m	—	—	—	—	—		
37860-87L00-000 080	TROLL MODE SWITCH PANEL		—	—	—	—	※2	1	

REMOTE-CONTROL KIT for DUAL ENGINE + SINGLE STATION				KIT		Total Required Quantity
PART NUMBER	PART NAME	LENGTH	1st Station	1st Station		
			67000-93J15-000 BINNACLE-MOUNT CONTROL KIT	67000-93J59-000 BINNACLE-MOUNT CONTROL KIT		
① 67200-93J23-000 068	BINNACLE MOUNT R/C BOX		1	1	1	
② 37100-96J14-000 078	DUAL IGNITION WITH E/S SWITCH		1	1		
36620-93J02-000 073	MAIN WIRING HARNESS	5.0m	—	2	2	
36620-93J52-000		6.5m	—	—		
36620-93J62-000		8.0m	—	—		
36620-94J01-000		6.5m	—	—		
34200-93J12-000 021	TACHOMETER (FACE : WHITE)		—	2	2	
34800-93J11-000 027	TRIM GAUGE (FACE : WHITE)		—	2		
④ 38500-93J90-000 082	WARNING BUZZER		—	—	2	
09407-08401-000	WARNING-BUZZER CLAMP		—	—	2	
67320-93J00-000 084	R/C CABLE (FOR THROTTLE AND SHIFT CABLES)	8ft. / 2.44m	—	—	4	
67320-93J10-000		10ft. / 3.05m	—	—		
67320-93J20-000		12ft. / 3.66m	—	—		
67320-93J30-000		14ft. / 4.27m	—	—		
⑤ 67320-93J40-000		16ft. / 4.88m	—	—		
67320-93J50-000		18ft. / 5.49m	—	—		
67320-93J60-000		20ft. / 6.10m	—	—		
67320-93J70-000		22ft. / 6.71m	—	—		
67320-93J80-000	24ft. / 7.32m	—	—			
36620-93J10-000	MAIN WIRING HARNESS EXTENSION	2m	—	—	1	
36620-93J40-000		3m	—	—		
37860-87L00-000 080	TROLL MODE SWITCH PANEL		—	※2	1	

These accessories in yellow painted are optional ones. Please select your best one depending on your rigging system.

※1 The side mount control box is equipped with an ignition switch, an emergency switch and warning buzzer with clamp.

※2 For more accurate speed control, please purchase the TACHOMETER (34200-93J50(40)) separately.

BINNACLE-MOUNT REMOTE CONTROL BOX



67200-93J13-000 067
Single-engine
Applicable Model DF8A-250



67200-93J23-000 068
Dual-engine
Applicable Model DF8A-250

FLUSH-MOUNT REMOTE CONTROL BOX



67200-93J32-000 069
Single-engine
Applicable Model DF8A-250

SIDE-MOUNT REMOTE CONTROL BOX



67200-91J20-000
Single-engine
Applicable Model DF4-6

67200-94J20-000 070
Single-engine. With warning buzzer
Applicable Model DF8A-30A

67200-93J50-000
Single-engine. With PTT switch
Applicable Model DF9.9B-250

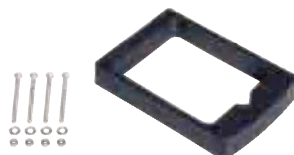
67200-89E40-000
Single-engine. With warning buzzer
Applicable Model DT30/40W

CONNECTION between ENGINE and CONTROL SYSTEM

SPACER KIT for REMOTE CONTROL BOX



67500-93J00-000 071
for Single Binnacle-mount type
Applicable Model DF8A-250



67500-93J10-000 072
for Dual Binnacle-mount type
Applicable Model DF8A-250

MAIN WIRING HARNESS



36620-93J52-000
5.0 meters for Control system
Applicable Model DF40A-250

36620-94L00-000
5.0 meters for Control system
Applicable Model DF25A/30A

36620-93J02-000 073
6.5 meters for Control system
Applicable Model DF40A-250

36620-93J62-000
8.0 meters for Control system
Applicable Model DF40A-250

36620-94J01-000
6.5 meters for Control system without
Monitor-signal wire,
Trim-sender wire and PTT-SW wire
Applicable Model DF8A/9.9B/15A/20A

36620-94L10-000
5.0 meters for Control system without
Trim-sender wire and PTT-SW wire
Applicable Model DF25A/30A

MAIN WIRING HARNESS EXTENSION

36620-93J10-000
2.0 meters for Control system
Applicable Model DF9.9B-250

36620-93J40-000
3.0 meters for Control system
Applicable Model DF9.9B-250

BATTERY LEAD



36625-93J10-000 074
6.7 meters
Applicable Model DF70-90A/150/175/200A/
200-250

36625-93J00-000
3.9 meters
Applicable Model DF70-90A/150/175/200A/
200-250

COMPONENT OF MECHANICAL REMOTE CONTROL SYSTEM

IGNITION SWITCH PANEL



37100-96J00-000 075

Single ignition
Applicable Model DF9.9B-250

37100-99E00-000

Single ignition
Applicable Model DT30

EMERGENCY SWITCH PANEL



37803-93J04-000 076

Applicable Model DF9.9B-300AP

37803-99E04-000

Applicable Model DT30

IGNITION SWITCH PANEL



37100-96J24-000 077

Single ignition with
Emergency-stop switch
Applicable Model DF9.9B-250

IGNITION SWITCH PANEL



37100-96J14-000 078

Dual ignition with
Emergency-stop switch
Applicable Model DF9.9B-250

LIGHTING SWITCH PANEL



37210-93J00-000 079

Applicable Model DF9.9B-250, DT30/40W

TROLL MODE SWITCH PANEL



37860-87L00-000 080

Applicable Model DF40A-140A/150TG/ZG/
175TG/ZG/200A/AP/250AP/
300AP

Activates SUZUKI Troll Mode System and controls RPM from idling engine speed up to 1200rpm at every 50rpm.

PTT SWITCH PANEL



37805-93J00-000 081

Applicable Model DF40A-250

WARNING BUZZER



38500-93J90-000 082
Applicable Model DF9.9B-300AP

THRU-HULL-HOSE ATTACHMENT



67300-90J00-000
Applicable Model DF70A-140A

67300-93J00-000 083
Applicable Model DF150-300AP

TWIN REMOCON ATTACHMENT KIT



67140-95600-000 085
Applicable Model DF8A-250, DT30/40W

REMOTE-CONTROL CABLE



67320-93J00-000 084
8 feet 2.44 meters
Applicable Model DF4-250, DT30/40W

67320-93J10-000
10 feet 3.05 meters
Applicable Model DF4-250, DT30/40W

67320-93J20-000
12 feet 3.66 meters
Applicable Model DF4-250, DT30/40W

67320-93J30-000
14 feet 4.27 meters
Applicable Model DF4-250, DT30/40W

67320-93J40-000
16 feet 4.88 meters
Applicable Model DF4-250, DT30/40W

67320-93J50-000
18 feet 5.49 meters
Applicable Model DF4-250, DT30/40W

67320-93J60-000
20 feet 6.10 meters
Applicable Model DF4-250, DT30/40W

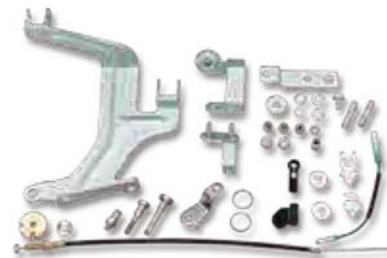
67320-93J70-000
22 feet 6.71 meters
Applicable Model DF4-250, DT30/40W

67320-93J80-000
24 feet 7.32 meters
Applicable Model DF4-250, DT30/40W

GENUINE REMOTE-CONTROL CABLES employ the latest in cable technology. The inner core is encased in nylon, and travels back and forth in a high-density polyethylene liner.

REMOTE-CONTROL ATTACHING KIT

Converts ME model to REMOTE-CONTROL model.



67101-91J00-000 086
Applicable Model DF4-6

67130-94L00-000
Applicable Model DF25A/30A

67130-94L10-000
Applicable Model DF25ATH/DF30ATH

67130-99J00-000
CLAMP BRACKET SET (41100-99J00-0EP) is required for installing 67130-99J00-000.
Applicable Model DF8A/9.9A

67130-89L02-000
Applicable Model DF9.9B/15A/20A

67130-91L00-000
Applicable Model DT25K/30

67130-94402-000
Applicable Model DT40W

CLAMP BRACKET SET

41100-99J00-0EP
Applicable Model DF8A/9.9A

STEERING

TILLER HANDLE KIT



63002-88L21-0EP 087

Applicable Model DF40A/50A

63002-88L11-0EP 088

Applicable Model DF60A/50AV/60AV

63002-87L12-0EP 089

Applicable Model DF70A-90A

63002-90J31-0EP 090

with Adjustable Steering Damper

Applicable Model DF100A/115A

Main features



Tachometer with warning indicators



Three position angle adjustable bracket



Troll mode switch

- Activates SUZUKI Troll Mode System and controls RPM from idling engine speed up to 1200rpm at every 50rpm.



Power trim & tilt switch and throttle grip friction adjuster

TILLER HANDLE KIT



The conventional kits are also applicable.

63002-88L07-0EP

Applicable Model DF40A-60A

63002-87L04-0EP

Applicable Model DF70A-90A

63002-90J26-0EP 091

with Adjustable Steering Damper

Applicable Model DF100A/115A

CONTENTS: Ignition switch, Engine-stop switches, Wiring harness, Cables and Grommets
TILLER HANDLE KITS are designed for easy installation for selected electric start models.

DUAL-ENGINE TIE-BAR



67600-90J00-000 092

Stainless steel

Applicable Model DF100A-140A

67600-93J00-000

Stainless steel

Applicable Model DF150-250

STEERING EXTENSION KIT



67630-93J00-000 093

for installation of DUAL-ENGINE TIE-BAR
(67600-93J00-000)

Applicable Model DF150-250

STEERING CABLE SEAL



41161-94400-000 094

Applicable Model DF8A-250, DT25K-40W

STEERING-BRACKET ATTACHMENT



43755-87L00-000 095

Applicable Model DF70A/90A

43755-88L00-000

Applicable Model DF40A-60A

43755-94L00-000

Applicable Model DF25A-30A

43755-99J00-000

Applicable Model DF8A-20A

43755-96320-000

Applicable Model DT25K/30/40W

DRAG-LINK KIT



67700-87L01-000 096

Applicable Model DF70A-90A

67700-93J00-000

Applicable Model DF40A-60A/200-250

67700-96J00-000

Applicable Model DF150-175/200A/AP

67701-87J11-000

Applicable Model DF40A-60A/200-250

67701-87L01-000

Applicable Model DF70A-90A

67701-90J01-000

Applicable Model DF100A-140A

67701-96J00-000

Applicable Model DF150-175/200A/AP

67701-94420-000

Applicable Model DT25K/30

67701-94L00-000

Applicable Model DF25A/30A

67701-99J02-000

Applicable Model DF8A-DF20A

Recommended STEERING SYSTEM supplied by



SEASTAR SOLUTIONS®

www.seastarsolutions.com

Order taking, delivery, technical support and warranty for these products are handled by SeaStar Solutions.

Please consult to local SeaStar Solutions distributor or dealer if you need more detail for product information, price, availability and all business terms.

STEERING KIT

BAYSTAR™



BAYSTAR

BAYSTAR OUTBOARD SYSTEM - HK4645H

System comprises:

BayStar Helm 1.4cu" (22.94cc)	HH4314
BayStar Compact Cylinder	HC4645H*
20ft "cut to length" tubing kit	HT4420H
2 x 1 litre hydraulic oil	HO5430

*Note: 115-140hp four stroke 2001 to current model require HC4658H.

SEASTAR™



SEASTAR

SEASTAR OUTBOARD SYSTEM - HK6400

System comprises:

SeaStar Helm 1.7cu" (27.80cc)	HH5271
SeaStar Pivot Cylinder	HC5345*
2 x 1 litre hydraulic oil	HO5430

Note: 1 x SeaStar hose kits must be ordered separately

*Note: 115-140hp 1996 only requires HC5348, 40-140hp four stroke 1998 to current model and 90hp four stroke 2003 to current model require HC5358.

SEASTAR P/A™



SEASTAR POWER ASSIST

SEASTAR OUTBOARD POWER ASSIST SYSTEM

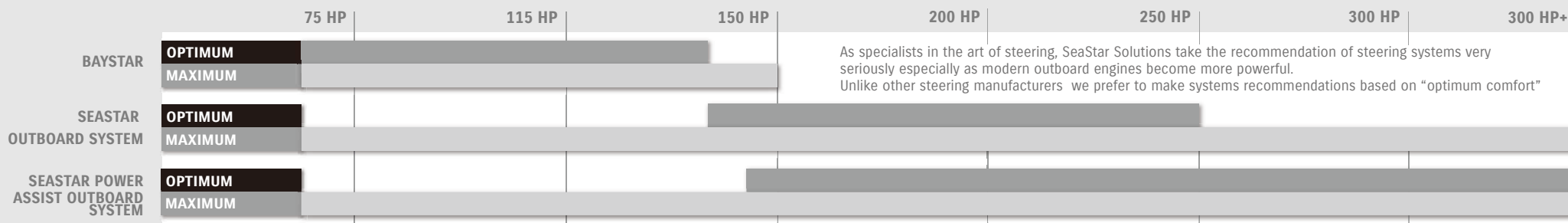
System comprises:

SeaStar Helm 1.7cu" (27.80cc)	HH5271
SeaStar Pivot Cylinder	HC5345*
2 x 1 litre hydraulic oil	HO5430
SeaStar 12v Power Assist Unit	PA1200-2

Note: 2 x SeaStar hose kits must be ordered separately

*Note: 115-140hp 1996 only requires HC5348, 40-140hp four stroke 1998 to current model and 90hp four stroke 2003 to current model require HC5358.

*For further application information please refer to www.seastarsolutions.com

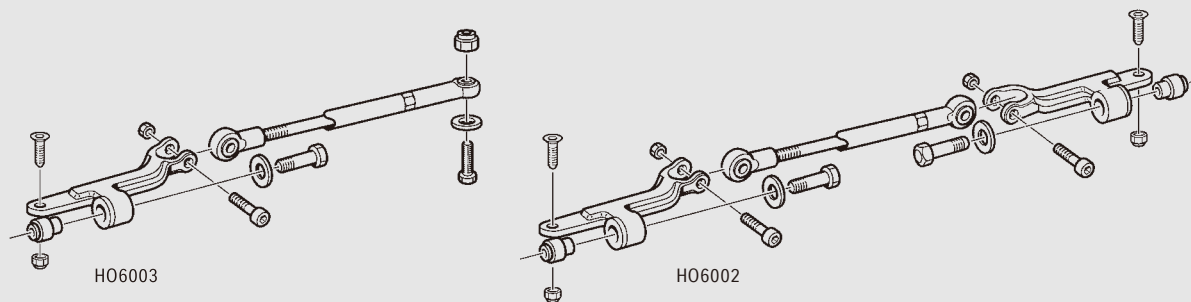


TIE-BAR KIT

Features

General purpose system.
 Single and multiple engine capability.
 Total power up to 700 HP
 *counter-rotating.

Independent engine tilt for twin engine
 Easy steering.
 5 turns lock to lock steering response.



Applications

Twin Engine Application for Suzuki Outboard Motors

MODEL (4-CYCLE)	CYLINDER	TIE BAR KITS		NOTES
		TWIN ENGINE SINGLE CYL.	TWIN ENGINE DUAL CYL.	
DF40A/50A/60A	HC5358	HO6003	HO6002	Requires kit HO5090
DF70A/80A/90A	HC5358	HO6003	HO6002	Requires kit HO5090
DF100	HC5358	HO6003	HO6002	Requires kit HO5090
DF115/140	HC5358	HO6003	HO6002	Requires kit HO5090
DF150/175	HC5345	HO6003	HO6002	
DF200/225/250	HC5345	HO6003	HO6002	
DF300	HC5345	HO6003	HO6002	

Triple Engine Configuration for Suzuki Outboard Motors

MODEL (4-CYCLE)	CYLINDER	TIE BAR KITS		NOTES
		PORT ENGINE TO DRIVE CYL.	STARBOARD ENGINE TO DRIVE CYL.	
DF150/175	HC5345	HO6003	HO6002	See notice
DF200/225/250	HC5345	HO6003	HO6002	See notice
DF300	HC5345	HO6003	HO6002	See notice

ELECTRICAL PARTS

ELECTRIC STARTER KIT



31000-94L01-000 097

Applicable Model DF25A/30A

31000-99J00-000

Applicable Model DF8A/9.9A

31000-89L02-000

Applicable Model DF9.9B/15A/20A

Converts MZ model into ME model.

BATTERY CHARGING KIT

32000-91J13-000

80W

Applicable Model DF4-6

32000-94L00-000

80W

Applicable Model DF25A/30A

32000-99J00-000

80W

Applicable Model DF8A/9.9A

32000-89L00-000

80W

Applicable Model DF9.9B/15A/20A

RECTIFIER SET



32801-91J01-000 098

Applicable Model DF4-6

RECEPTACLE KIT



39600-91J13-000

Applicable Model DF4-6

39600-94J01-000 102

Applicable Model DF8A/9.9A

39600-89L00-000

Applicable Model DF9.9B/15A/20A

COUNTER SELECT CONNECTOR



36612-98J01-000 106

Applicable Model DF200AP/250AP/300AP

Converts DF300AP/250AP to counter rotation specification.



32801-95J01-000 099

Applicable Model DF8A/9.9A

32801-89L00-000

Applicable Model DF9.9B/15A/20A

39600-94L00-000 103

Applicable Model DF25A/30A

BATTERY ISOLATOR LEAD SET



33830-98J11-000 107

Applicable Model DF150TG/ZG/175TG/ZG/200A/AP/250AP/300AP



32801-96304-000 100

Applicable Model DT25K/30

39600-93910-000 104

Applicable Model DT9.9A-40W

FLYWHEEL



32102-96462-000 108

Applicable Model DT30



32801-94402-000 101

Applicable Model DT40W

STARTER MOTOR SET



31101-96320-0EP 105

Applicable Model DT30

STARTING SWITCH & CABLE SET



33800-96304-000 109

Applicable Model DT30

ANODE

FUEL SYSTEM

GENUINE RIGGING-PARTS AND ACCESSORIES

ZINC ANODE for saltwater



55300-95500-000 ¹¹⁰

Applicable Model DF8A/9.9A/40A-60A,
DT25K-40W



55320-95311-000 ¹¹¹

Applicable Model DF40A-60A/150-300AP



55125-96310-000 ¹¹²

Applicable Model DF25/R/Q



55321-90J01-000 ¹¹³

Applicable Model DF50AV/60AV/100A-140A

ALUMINUM ANODE for brackish water, saltwater



55321-87J00-000 ¹¹⁴

Applicable Model DF2.5-300AP,
DT9.9AK/15AK



55320-94900-000 ¹¹⁵

Applicable Model DF60A-300AP



55321-95J00-000 ¹¹⁶

Applicable Model DF2.5

55321-93J00-000 ¹¹⁷

Applicable Model DF150-300AP

MAGNESIUM ANODE for freshwater



55321-87J10-000 ¹¹⁸

Applicable Model DF4-300AP,DT9.9A/15A



55321-94910-000 ¹¹⁹

Applicable Model DF70A-300AP

FUEL TANK

NOTE : These tanks do not meet US-EPA requirements.



65000-99100-000 ¹²⁰

12-litre plastic tank with
no fuel-level gauge

Applicable Model DF4/5/6, DT9.9AK/
15AK/25K/40WK
(-K:For Gasoline)

65000-95D01-000 ¹²¹

25-litre plastic tank with
a fuel-level gauge

Applicable Model DF8A-140A,
DT9.9AK-40W/WR/WK
(-K:For kerosene)

65000-89L10-000

12-litre plastic tank

Applicable Model DF8A-20A

REPLACEMENT FUEL CAP

NOTE : These caps do not meet US-EPA requirements.

65520-99100-000

for 12-litre tank with no fuel-level gauge

Applicable Model DF5-20A/R,DT9.9AK/15AK/25K/40WK

65520-95D01-000

for 25-litre tank with a fuel-level gauge

Applicable Model DF8A-140A,DT9.9AK-40W/WR/WK

FUEL-HOSE SOCKET



65750-98505-000 ¹²²

Metal, Inner diameter: 11.2 mm

Applicable Model DF4-20A/R, DT9.9K-40W/
WR/WK



65750-87J11-000 ¹²³

Plastic, Inner diameter: 6.6 mm

Applicable Model DF4/8A-30A



65750-95500-000 ¹²⁴

Metal, Inner diameter: 13.0 mm

Applicable Model DF8A/R-140A,
DT9.9AK-40W/WR/WK

FUEL SYSTEM

FUEL CONNECTOR (ENGINE SIDE)



65720-986B0-000 125

Plastic

Applicable Model DF4

FUEL CONNECTOR (TANK SIDE)



65740-95D01-000 126

Outer diameter: 13 mm, 1/4"NPT

Applicable Model DF8A/R-140A,
DT9.9/K-40W/WR/WK

SQUEEZE PUMP



65770-99J01-000 127

Small-in & Large-out

Applicable Model DF4-6, DT9.9AK/15AK/25K/40WK

65770-90J11-000

Large-in & Large-out

Applicable Model DF8A-140A, DT9.9AK/15AK/25K/40WK

65770-93J11-000

Large-in & Large-out

Applicable Model DF150-300AP

65770-90L01-000

Large-in & Small-out

Applicable Model DT9.9A/15A/30/40W

SQUEEZE PUMP

(Meets US-EPA requirements.)

65770-94J02-000

Small-in & Large-out

Applicable Model DF4/6

65770-90J02-000

Large-in & Large-out

Applicable Model DF8A-25A/30A

65770-93J02-000

Large-in & Large-out

Applicable Model DF150-300AP

FUEL-HOSE COMPONENT



65700-94JD1-000

for 12-litre plastic tank to engine

Applicable Model DF4-6

65700-93J02-000 128

for fuel tank to engine

Applicable Model DF150-300AP

65700-87J15-000

for 25-litre plastic tank to engine

Applicable Model DF8A-20A

65700-90J14-000

for 25-litre plastic tank to engine

Applicable Model DF40A-140A

65700-95D04-000

for 12-litre plastic tank to engine (gasoline)

Applicable Model DT9.9AK/15AK/25K/40WK

65700-96362-000

for 25-litre plastic tank to engine (kerosene)

Applicable Model DT9.9AK/15AK/25K/40WK

65700-94415-000

with fuel filter (gasoline)

Applicable Model DT9.9AK/15AK/25K/40WK

65700-94433-000

with fuel filter (kerosene)

Applicable Model DT9.9AK/15AK

Only for P36 ver.

FUEL-HOSE COMPONENT

(Meets US-EPA requirements.)

65700-91J25-000

Applicable Model DF4/6

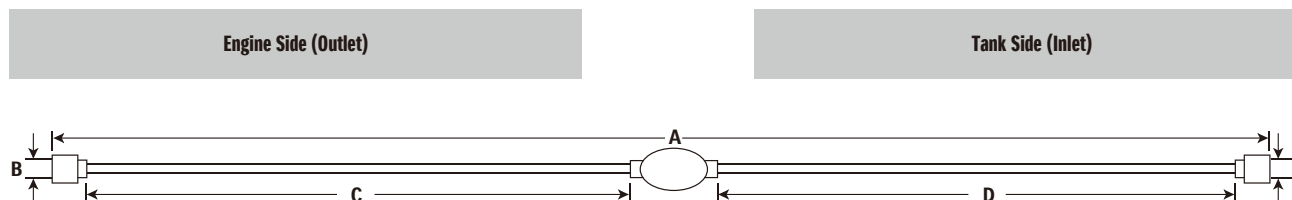
65700-87J24-000

Applicable Model DF8A-25

65700-88L03-000

Applicable Model DF40A-60A

FUEL-HOSE COMPONENT Chart



FUEL HOSE COMPONENT		SOCKET			HOSE				SQUEEZE PUMP	HOSE				SOCKET		
Part Number	A Length (mm)	Material	B I/D (mm)	Part Number	C Length (mm)		I/D (mm)	O/D (mm)		D Length (mm)		I/D (mm)	O/D (mm)	Material	E I/D (mm)	Part Number
65700-94JD1-000	1970	Plastic	6.6	65750-87J11-000	700	Large	7.3	12.5	65770-99J00-000	1100	Small	5.3	10.5	Metal	11.2	65750-98505-000
65700-93J02-000	2370	(no socket)	-	-	(no hose)	-	-	-	65770-93J11-000	2250	Large	9.0	14.0	(no socket)	-	-
65700-87J15-000	1970	Plastic	6.6	65750-87J11-000	700		7.3	12.5	65770-90J10-000	1100		7.3	12.5	Metal	13.0	65750-95500-000
65700-90J14-000	1250	(no socket)	-	-	(no hose)	-	-	-	65770-90J10-000	1100		7.3	12.5	Metal	13.0	65750-95500-000
65700-95D04-000	2550	Metal	13.0	65750-95500-000	300		7.3	12.5	65770-99J00-000	2090		5.3	10.5	Metal	11.2	65750-98505-000
65700-96362-000	2620	Metal	11.2	65750-98505-000	300		5.3	10.5	-	2250		7.3	12.5	Metal	13.0	65750-95500-000
65700-94415-000	3100	Metal	13.0	65750-95500-000	300		7.3	12.5	65770-90J10-000	2600		7.3	12.5	-	-	-
65700-94433-000	3100	Plastic	13.8	65750-94404-000	3000		7.3	12.5	-	-		-	-	-	-	-
65700-91J23-000	2000	Plastic	6.6	65750-87J11-000	700		7.3	12.5	65770-94J00-000	1100		5.3	10.5	Metal	11.2	65750-98505-000
65700-87J24-000	2000	Plastic	6.6	65750-87J11-000	700		7.3	12.5	65770-90J00-000	1100		7.3	12.5	Metal	13.0	65750-95500-000
65700-88L01-000	1280	(no socket)	-	-	(no hose)	-	-	-	65770-90J00-000	1100		7.3	12.5	Metal	13.0	65750-95500-000

WATER SEPARATOR / FUEL FILTER



65900-98J00-000

129

Applicable Model DF8A-300AP,DT9.9A-40W/WR/WK

ELEMENT SET



65910-98J00-000

130

Applicable Model DF8A-300AP, DT9.9A-40W/WR/WK

PROPELLER

What is PROPELLER

Propeller selection is very important in the performance of your boat. Acceleration, speed, fuel efficiency, stability and engine RPM all are affected by the propeller selected. Operating requirements and conditions will also affect which design, style and pitch of propeller you may choose to meet your individual needs. The boat and engine combination may have already been tested by your dealer or the boat manufacturer for the appropriate propeller size. Your Suzuki Dealer can assist you with the process to determine the correct propeller for your application.

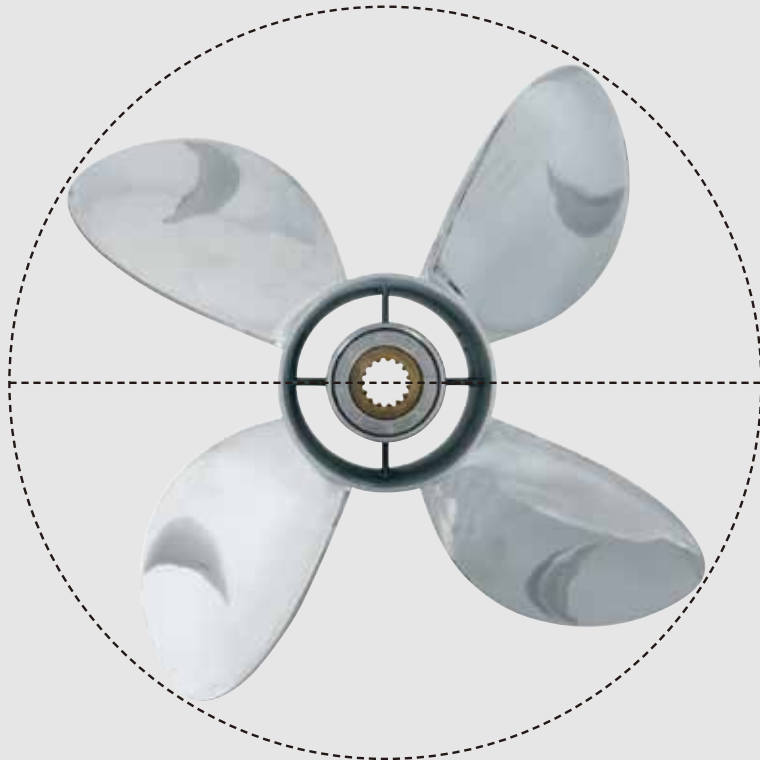
Stainless Steel Propellers

Suzuki Stainless Steel Propellers offer higher performance and greater durability than aluminum propellers. The aggressive design of these propellers enhances the overall performance of your boat and the durability of the stainless steel construction will give you long term dependability. Your Suzuki Stainless Steel propeller is also fitted with a rubber cushion hub to help absorb vibration and shock should you strike a foreign object.

Propeller Sizing

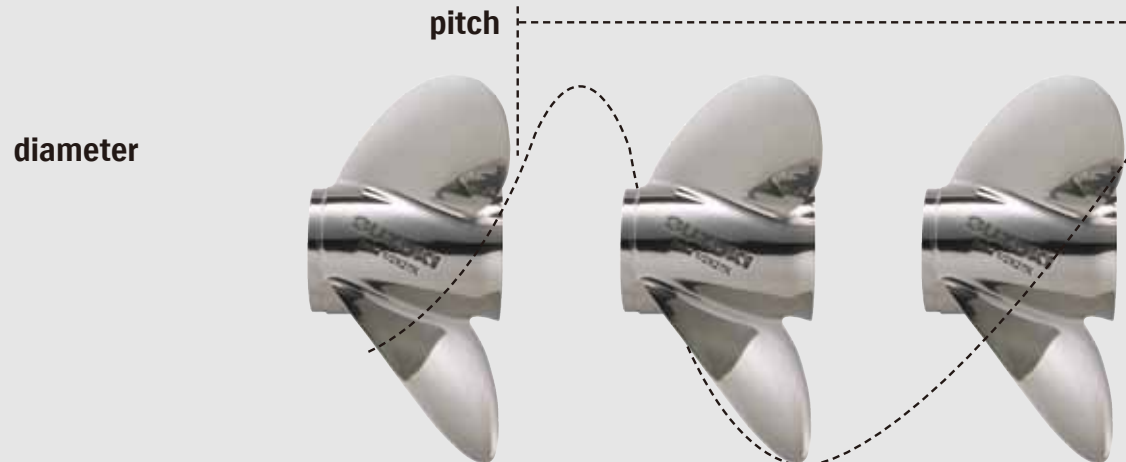
When referring to propeller size, such as 3 x 13 x 18, the first number is the number of blade, the second number details the diameter of the propeller and the third number is the pitch of the propeller.

The pitch is the most significant number in the description. The diameter is usually predetermined by the propeller engineers and is based on the size and series of the engine.



Diameter

Diameter is considered to be the distance across an imaginary circle that is made when a propeller is rotated. Diameter is determined during the engineering process of designing a propeller and is usually based on requirements to meet the needs of engine size, gear case design, horsepower and speed.



Pitch

Pitch is used to describe the theoretical distance that a propeller “cork screws” through the water in inches of forward travel. In theory, an 18” pitch propeller would move ahead 18” with each complete revolution of a propeller. There is always some percentage of inefficiency as water conditions, boat weight and propeller style are introduced into the performance equation. The lower the “slip factor,” the more efficiently the propeller will perform and the faster the speed at a given engine RPM. Lower pitches accelerate faster, but have a lower top end speed. Higher pitches have a slower acceleration, but may attain higher top speeds. An inch of pitch generally is equal to 150-200 engine RPM at wide open throttle (WOT). If pitch is increased by an inch, RPM will decrease by 150-200 RPM at WOT. If pitch is decreased by an inch, RPM will increase by 150-200 RPM at WOT. Always operate your boat/engine combination within the recommended RPM range guidelines as stated in your operator’s manual. Operating outside the recommended range can cause severe damage to your engine and may void the engine warranty.



Propeller Cup

Cup is used to reduce the slip and ventilation of the propeller. This will allow you to operate your engine at a higher transom mounting and allow you to use more trim for bow lift. The cup refers to the area along the trailing edge of the propeller blade that has an increased pitch in the last 1/2” of the blade surface and extends to the blade tip.

Rake

Rake is described as the angle, in degrees, that the propeller blades are mounted to the “barrel” of the propeller. The blades of a zero degree rake propeller are mounted perpendicular to the “barrel” of the propeller. The blades of a higher rake propeller angle more to the rear of the propeller. A propeller with a high rake design will hold the water on the blades longer during operation and will ventilate less at higher engine heights. High rake propellers will produce higher thrust that will help lift the bow of the boat more effectively.

HARDWARE FOR PROPELLER

Applicable Model	STOPPER		PROPELLER BUSH		HARDWARE KIT	Contents of HARDWARE KIT			
		SPACER				SPACER	WASHER	NUT	COTTER PIN
DF2.5	57635-91JL0-000	-	58120-97JA0-000	Press-In	N/A	-	-	58130-91JL0-000	09204-03003-000
DF4/5/6	57635-91JL0-000	-	58120-91JL0-000	Press-In	N/A	-	-	58130-91JL0-000	09204-03003-000
DF8A/9.9A	57632-94J00-000	-	58120-93701-000	Press-In	N/A	-	09160-12066-000	09141-12005-000	09204-02004-000
DF9.9B/15A/20A, DT9.9A/15A	57632-94J00-000	-	58120-89L00-000	Press-In	N/A	-	09160-12066-000	09141-12005-000	09204-02004-000
DF25	57632-95J00-000	-	58120-96401-000	Press-In	57630-96300-000	57633-96300-000	09160-14028-000	09141-14008-000	09204-03003-000
DT25/30	57632-91L00-000	-	58120-96401-000	Press-In	57630-96300-000	57633-96300-000	09160-14028-000	09141-14008-000	09204-03003-000
DT40	57632-92L00-000	-	58120-88L01-000	Press-In	57630-94300-000	57633-94300-000	09160-18028-000	09141-18005-000	09204-03003-000
DF40A/50A/60A	57632-95320-000	-	58120-88L01-000	Press-In	57630-94300-000	57633-94300-000	09160-18028-000	09141-18005-000	09204-03003-000
DF50AV/60AV	57635-90J01-000	-	*58105-90J00-000	Press-In	57630-94500-000	57633-90J02-000	09160-18028-000	09141-18005-000	09204-03003-000
DF70A/80A/90A	57632-87L01-000	-			57630-90J00-000	57633-90J02-000	09160-18028-000	09141-18005-000	09204-03003-000
DF100A/115A T model (Right-Hand-Rotation)	57635-90J01-000	57632-90J00-000	*58105-90J00-000	Press-In	57630-90J00-000	57633-90J02-000	09160-18028-000	09141-18005-000	09204-03003-000
DF115A Z model (Counter-Rotation)	57635-92J01-000	-	**58120-90J00-000		57630-90J00-000	57633-90J02-000	09160-18028-000	09141-18005-000	09204-03003-000
DF140A	57635-92J01-000	-			57630-90J00-000	57633-90J02-000	09160-18028-000	09141-18005-000	09204-03003-000
DF150-300AP	57632-93L01-000	-	***58105-93J00-000 ****58105-93J10-000	Press-In	57630-92E00-000	57633-87D30-000	09160-18028-000	09141-18005-000	09204-03003-000

*58105-90J00 is for **58100-87Lxx, 58100-90Jxx, 58200-92J4x-92J9x and 58200-92JAx-92JDx**. **58120-90J00 is for **58200-90J0x-90J3x and 58200-92J0x-92J3x**. ***58105-93J00 is for **58200-96Jxx**.

****58105-93J10 is for **58200-93Jxx, 58200-93Lxx and 58300-93Jxx**.

These bold letters indicate a proper part number in P34 & 35. Please refer to next pages.

PROPELLER

*RR:Right-Hand-Rotation model, CR:Counter-Rotation model

model	type	material	blabe	diamater	pitch	rotation*	description	part number
DF2.5	A520	Aluminum	3	7 3/8	5 3/8	RR		58110-97JA0-019
DF4	C601	Aluminum	3	7 1/2	6	RR		58110-91JL0-019
DF5	C611	Aluminum	3	7 1/2	6 1/2	RR		58110-91JM0-019
DF6	C701	Aluminum	3	7 1/2	7	RR		58110-91JN0-019
DF8A	M701	Aluminum	3	9 1/4	7	RR		58100-89L00-019
DF9.9A	M821	Aluminum	3	9 1/4	8	RR	THICK	58100-90L40-019
	M901	Aluminum	3	9 1/4	9	RR		58100-89L20-019
	M911	Aluminum	3	9 1/4	9	RR	THICK	58100-90L11-019
	M1001	Aluminum	3	9 1/4	10	RR		58100-89L30-019
	M1011	Aluminum	3	9 1/4	10	RR	THICK	58100-90L21-019
	M1101	Aluminum	3	9 1/4	11	RR		58100-93743-019
DF9.9B		Aluminum	4	10	5	RR	High thrust	58100-94JA1-019
DF15A		Aluminum	3	9 1/4	7	RR		58100-89L00-019
DF20A		Aluminum	3	9 1/4	8	RR	THICK	58100-90L40-019
		Aluminum	3	9 1/4	9	RR		58100-89L20-019
DT9.9A		Aluminum	3	9 1/4	9	RR	THICK	58100-90L50-019
DT15A		Aluminum	3	9 1/4	10	RR		58100-89L30-019
		Aluminum	3	9 1/4	10	RR	THICK	58100-90L60-019
		Aluminum	3	9 1/4	11	RR		58100-89L40-019
		Aluminum	3	9 1/4	12	RR		58100-89L50-019
DF25	P911	Aluminum	3	10 1/4	9	RR	THICK	58100-96371-019
DT25	P1001	Aluminum	3	10 1/4	10	RR		58100-96411-019
DT30	P1011	Aluminum	3	10 1/4	10	RR	THICK	58100-96471-019
	P1101	Aluminum	3	10 1/4	11	RR		58100-96421-019
	P1201	Aluminum	3	10 1/4	12	RR		58100-91L20-019
	P1211	Aluminum	3	10 1/4	12	RR	THICK	58100-96481-019
	P1301	Aluminum	3	10 1/4	13	RR		58100-91L30-019
	P1311	Aluminum	3	10 1/4	13	RR	THICK	58100-96491-019
	P1401	Aluminum	3	10 1/4	14	RR		58100-95D01-019
	P1501	Aluminum	3	10 1/4	15	RR		58100-96461-019

model	type	material	blabe	diamater	pitch	rotation*	description	part number
DF40A	S900	Aluminum	3	11 1/2	9	RR		58100-88L03-019
DF50A	S1000	Aluminum	3	11 1/2	10	RR		58100-88L13-019
DF60A	S1100	Aluminum	3	11 1/2	11	RR		58100-88L23-019
DT40	S1200	Aluminum	3	11 5/8	12	RR		58100-88LA0-019
	S1301	Aluminum	3	11 1/2	13	RR		58100-88LB0-019
	S1400	Aluminum	3	11 3/8	14	RR		58100-88L52-019
	S1500	Aluminum	3	11 1/4	15	RR		58100-88L62-019
	S1600	Aluminum	3	11 1/8	16	RR		58100-88L72-019
	S1700	Aluminum	3	11	17	RR		58100-88L83-019
	SS1600	Aluminum	3	11 1/8	16	RR		58200-88L30-000
			Aluminum	3	14	9	RR	
DF50AV		Aluminum	3	14	11	RR		58100-87LH0-019
DF60AV		Aluminum	3	13 3/4	12	RR		58100-87LJ0-019
		Aluminum	3	14	13	RR		58100-87LA0-019
		Aluminum	3	13 7/8	15	RR		58100-87LB0-019
		Aluminum	3	13 3/4	17	RR		58100-87LC0-019
		Aluminum	3	14	13	RR		58100-87LA0-019
DF70A		Aluminum	3	14	13	RR		58100-87LA0-019
DF80A		Aluminum	3	13 7/8	15	RR		58100-87LB0-019
		Aluminum	3	13 3/4	17	RR		58100-87LC0-019
DF90A		Aluminum	3	13 3/4	19	RR		58100-87LD0-019
		Aluminum	3	13 3/4	21	RR		58100-87LE0-019
		Aluminum	3	13 3/4	23	RR		58100-87LF0-019
		Aluminum	3	13 1/2	15	RR		58100-90JE0-019
		Aluminum	3	14	17	RR		58100-90JA0-019
		Aluminum	3	14	19	RR		58100-90JB0-019
		Aluminum	3	14	21	RR		58100-90JC0-019
		Aluminum	3	14	23	RR		58100-90JD0-019
		Stainless	3	14 1/4	18	RR		58200-90J00-000
		Stainless	3	14 1/4	20	RR		58200-90J10-000
		Stainless	3	14 1/4	22	RR		58200-90J20-000
		Stainless	3	14 1/4	24	RR		58200-90J30-000
	Stainless	3	13 7/8	15	RR		58200-92J40-000	
	Stainless	3	13 7/8	17	RR		58200-92J50-000	
	Stainless	3	13 7/8	19	RR		58200-92J60-000	
	Stainless	3	13 7/8	21	RR		58200-92J70-000	
	Stainless	3	13 7/8	23	RR		58200-92J80-000	
	Stainless	3	13 7/8	25	RR		58200-92J90-000	

model	type	material	blabe	diamater	pitch	rotation*	description	part number
DF100A		Aluminum	3	13 1/2	15	RR		58100-90JE0-019
DF115A		Aluminum	3	14	17	RR		58100-90JA0-019
DF140A		Aluminum	3	14	19	RR		58100-90JB0-019
		Aluminum	3	14	21	RR		58100-90JC0-019
		Aluminum	3	14	23	RR		58100-90JD0-019
		Stainless	3	14 1/4	18	RR		58200-90J00-000
		Stainless	3	14 1/4	20	RR		58200-90J10-000
		Stainless	3	14 1/4	22	RR		58200-90J20-000
		Stainless	3	14 1/4	24	RR		58200-90J30-000
		Stainless	3	14 1/4	18	CR		58200-92J00-000
		Stainless	3	14 1/4	20	CR		58200-92J10-000
		Stainless	3	14 1/4	22	CR		58200-92J20-000
		Stainless	3	14 1/4	24	CR		58200-92J30-000
		Stainless	3	13 7/8	15	RR		58200-92J40-000
		Stainless	3	13 7/8	17	RR		58200-92J50-000
		Stainless	3	13 7/8	19	RR		58200-92J60-000
		Stainless	3	13 7/8	21	RR		58200-92J70-000
		Stainless	3	13 7/8	23	RR		58200-92J80-000
		Stainless	3	13 7/8	25	RR		58200-92J90-000
		Stainless	3	13 7/8	17	CR		58200-92JA0-000
		Stainless	3	13 7/8	19	CR		58200-92JB0-000
		Stainless	3	13 7/8	21	CR		58200-92JC0-000
		Stainless	3	13 7/8	23	CR		58200-92JD0-000

model	type	material	blabe	diamater	pitch	rotation*	description	part number
DF150		Stainless	3	16	15	RR		58200-93L80-000
DF175		Stainless	3	16	17	RR		58200-93L00-000
DF200		Stainless	3	16	18 1/2	RR		58200-93L10-000
DF225		Stainless	3	16	20	RR		58200-93L20-000
DF250		Stainless	3	16	21 1/2	RR		58200-93L30-000
DF250AP		Stainless	3	16	23	RR		58200-93L40-000
DF300AP		Stainless	3	16	24 1/2	RR		58200-93L50-000
		Stainless	3	16	26	RR		58200-93L60-000
		Stainless	3	16	27 1/2	RR		58200-93L70-000
		Stainless	3	16	17	CR		58200-93LE0-000
		Stainless	3	16	18 1/2	CR		58200-93LA0-000
		Stainless	3	16	20	CR		58200-93LB0-000
		Stainless	3	16	21 1/2	CR		58200-93LC0-000
		Stainless	3	16	23	CR		58200-93LD0-000
		Stainless	3	16	24 1/2	CR		58200-93LF0-000
		Stainless	3	16	26	CR		58200-93LG0-000
		Stainless	3	15 1/2	17	RR		58200-96J00-000
		Stainless	3	15 1/4	19	RR		58200-96J10-000
		Stainless	3	15	21	RR		58200-96J20-000
		Stainless	3	14 3/4	23	RR		58200-96J30-000
		Stainless	3	14 1/2	25	RR		58200-96J40-000
		Stainless	3	14 1/2	27	RR		58200-96J50-000
		Stainless	3	15 1/2	17	CR		58200-96JA0-000
		Stainless	3	15 1/4	19	CR		58200-96JB0-000
		Stainless	3	15	21	CR		58200-96JC0-000
		Stainless	3	14 3/4	23	CR		58200-96JD0-000
		Stainless	3	14 1/2	25	CR		58200-96JE0-000
		Stainless	3	14 1/2	27	CR		58200-96JF0-000
		Stainless	4	15 1/4	18	RR		58300-93J00-000
		Stainless	4	15 1/4	20	RR		58300-93J10-000
		Stainless	4	15 1/4	22	RR		58300-93J20-000
		Stainless	4	15 1/4	24	RR		58300-93J30-000
		Stainless	4	15 1/4	26	RR		58300-93J40-000
		Stainless	4	15 1/4	20	CR		58300-93JA0-000
		Stainless	4	15 1/4	22	CR		58300-93JB0-000
		Stainless	4	15 1/4	24	CR		58300-93JC0-000
		Stainless	4	15 1/4	26	CR		58300-93JD0-000

CARE & MAINTENANCE ITEM

ENGINE COVER



68110-88L00-000 132

Applicable Model DF25/40A-60A, DT25/30

68110-87L00-000 133

Applicable Model DF70A-140A, DT40

68110-96J00-000 134

Applicable Model DF150T/Z-250T/Z

68110-89L00-000 131

Applicable Model DF8A-20A, DT9.9A-15A

68110-98J00-000 135

Applicable Model DF250AP/300AP



68110-96110-000

Applicable Model DF4-20A

68110-94400-000 136

Applicable Model DF25

68110-94510-000

Applicable Model DF40A-60A

FLUSH-HOSE ATTACHMENT



55181-95200-000 137

Applicable Model DF4-6/40A-60A, DT25K/30/40W



17917-87L00-000 138

Applicable Model DF8A-300A

2-CYCLE MOTOR OIL



99000-21B40-016 139

CCI OIL. Metal can with a cap & nozzle



99000-21740-006 140

CCIS SUPER OIL. Metal can with a cap & nozzle.

GREASE



99000-25011-000 141

SUPER GREASE-A
450 grams (15.8 oz) for Crank oil seal



99000-25350-000 142

WATER RESISTANT GREASE EP2
250 grams (8.8 oz)



99000-25140-000 143

MOLY PASTE
50 grams (1.7 oz)

GEAR OIL



99000-22B22-000 144

HYPOID GEAR OIL SAE90 API GL-5
400ml

PTT FLUID



99000-22810-000 145

Metal can with a cap
1 liter

PAINT



99000-10109-01T 146

Francois white
90 grams (3.0 oz)

99000-10109-0EP

Metallic shadow black
90 grams (3.0 oz)

LIQUID GASKET



93691-80030-000 147

SILICONE SEAL KE45T
100 grams



99000-31140-000 148

1207B (BLACK)
100 grams (3.4 oz)

THREAD LOCK



99000-32020-000 149
1333B (RED)
50 grams (1.7 oz)

NEW SUZUKI APPROVED GENUINE OIL

- Specialty designed oil for SUZUKI 2&4 stroke outboard motor.
- High quality 2stroke motor oil provide proper viscosity to be stability when temperature change and keep excellent oxidation.
- This 4 stroke outboard oil is formulated with special additives and high quality base oil.
- Outstanding performance for wear protection, viscosity stability, low volatility and excellent rust protection and corrosion.

*Availability may differ in some regions. Please contact Thai Suzuki Motor Co, Ltd. for more information and making an order.



2-STROKE ENGINE OIL "ULTIMATE" 151
Mineral, 1 liter, TCW-3



2-STROKE ENGINE OIL "PREMIUM" 152
Mineral, 1 liter, Equivalent to TCW-3



4-STROKE ENGINE OIL "PREMIUM" 153
SAE 10W-40, Mineral, SJ, Equivalent to FCW
1 liter and 5 liter Bottles are available

SUZUKI APPROVED GENUINE OIL by MOTUL

These products are supplied directly by MOTUL. Please note that these oils are not available in some countries. Please contact with local distributor of MOTUL.

Suzuki and MOTUL have been in partnership in MotoGP since 1988. Extending this trusted relationship led to the development of new Suzuki Marine Oils. These ranges of oils have excellent oxidation stability and provide outstanding rust protection under severe operating conditions.



99000-32160-000 150
1342 (BLUE)
50 grams (1.7 oz)

API Classification	SAE Viscosity Grade	
SG	10W-40	
SH	10W-40	
SL	10W-40	
SJ	10W-30	
SM	10W-30	
TEMP.	C	F
	-20 -10 0 10 20 30 40	-4 14 32 50 68 86 104



4-STROKE ENGINE OIL 154
SAE 10W-30 Semi-Synthetic
5 litre FCW



4-STROKE ENGINE OIL 155
SAE 10W-40 Semi-Synthetic
5 litre FCW



GEAR OIL
SAE 90, API GL-5
0.35 litre

* 4 kinds (1L,5L,60L,208L) of Engine oil volume and 3kinds (0.35L,1L,60L) of Gear oil are available. Please ask your local MOTUL dealer.

APPLICATION CHART

ITEM	Page	DF300AP	DF250AP	DF250		DF225		DF200		DF200AP	DF200A	DF175A				DF150				DF140A		DF115A			DF100A	DF90A	DF80A	DF70A		DF60A													
		DF300AP	DF250AP	DF250ST	DF250T	DF250Z	DF225T	DF225Z	DF200T	DF200Z	DF200AP	DF200AT	DF200AZ	DF175TG	DF175ZG	DF175T	DF175Z	DF150AS	DF150TG	DF150ZG	DF150T	DF150Z	DF140AT	DF140AZ	DF115AS	DF115AT	DF115AZ	DF100AT	DF90AT	DF90ATH	DF80AT	DF70AT	DF70ATH	DF60AT	DF60ATH	DF60AQH							
NEW MULTI FUNCTION GAUGE	P.06	○	○	○	○	○	○	○	○	○	○	○	○	○	○	○	○	○	○	○	○	○	○	○	○	○	○	○	○	○	○	○	○	○	○	○	○	○	○	○	○		
KEYLESS START SYSTEM	P.07									○																																	
SUZUKI MODULAR INSTRUMENT SYSTEM	P.08-13	○	○	○	○	○	○	○	○	○	○	○	○	○	○	○	○	○	○	○	○	○	○	○	○	○	○	○	○	○	○	○	○	○	○	○	○	○	○	○	○	○	
ANALOG INSTRUMENT	P.14-15			○	○	○	○	○	○																																		
ELECTRONIC THROTTLE AND SHIFT SYSTEM	P.16-19																																										
ELECTRONIC REMOTE CONTROL KIT	P.16-17	○	○							○								○	○																								
ELECTRONIC REMOTE CONTROL BOX	P.16	○	○							○								○	○																								
BATTERY LEAD	P.19	○	○							○								○	○																								
MECHANICAL REMOTE CONTROL SYSTEM	P.20-23																																										
MECHANICAL REMOTE CONTROL KIT	P.20			○	○	○	○	○	○		○	○					○				○	○																					
MECHANICAL REMOTE CONTROL BOX	P.21			○	○	○	○	○	○		○	○					○				○	○																					
BATTERY LEAD	P.21			○	○	○	○	○	○		○	○					○				○	○																					
REMOTE-CONTROL CABLE	P.23			○	○	○	○	○	○		○	○					○				○	○																					
REMOTE-CONTROL ATTACHING KIT	P.23			○	○	○	○	○	○		○	○					○				○	○																					
STEERING	P.24-25																																										
TILLER HANDLE KIT	P.24																																										
DUAL-ENGINE TIE-BAR	P.25			○	○	○	○	○	○	○	○	○	○	○	○	○	○	○	○	○	○	○	○	○	○	○	○	○	○	○	○	○	○	○	○	○	○	○	○	○	○	○	○
STEERING EXTENSION KIT	P.25			○	○	○	○	○	○	○	○	○	○	○	○	○	○	○	○	○	○	○	○	○	○	○	○	○	○	○	○	○	○	○	○	○	○	○	○	○	○	○	○
STEERING -BRACKET ATTACHMENT	P.25																																										
DLUG-LINK KIT	P.25			○	○	○	○	○	○	○	○	○	○	○	○	○	○	○	○	○	○	○	○	○	○	○	○	○	○	○	○	○	○	○	○	○	○	○	○	○	○	○	○
ELECTRICAL PARTS	P.28																																										
COUNTER SELECT CONNECTOR	P.28	○	○							○																																	
BATTERY ISOLATOR LEAD SET	P.28	○	○							○	○	○	○	○	○	○	○	○	○	○	○	○	○	○	○	○	○	○	○	○	○	○	○	○	○	○	○	○	○	○	○	○	○
ELECTRIC STARTER KIT (ONLY FOR MZ type)	P.28																																										
BATTERY CHARGING KIT (ONLY FOR MZ type)	P.28																																										
RECTIFIER SET (ONLY FOR MZ type)	P.28																																										
RECEPTACLE KIT (ONLY FOR MZ type)	P.28																																										
ANODE	P.29	○	○	○	○	○	○	○	○	○	○	○	○	○	○	○	○	○	○	○	○	○	○	○	○	○	○	○	○	○	○	○	○	○	○	○	○	○	○	○	○	○	○
FUEL SYSTEM	P.29-31	○	○	○	○	○	○	○	○	○	○	○	○	○	○	○	○	○	○	○	○	○	○	○	○	○	○	○	○	○	○	○	○	○	○	○	○	○	○	○	○	○	○



AWARDS

Our outboards have received numerous awards for innovation.

This success recognises our vast experience in developing technology (for motorcycles, ATVs and automobiles, as well as outboards) and precise understanding of our customers' needs.

Real Suzuki is built by Genuine Suzuki Accessories and Parts

Every Suzuki Product is built with Suzuki Genuine Accessories and Parts. They have the optimal design and specification tailored for the specific product and model. Every part has passed Suzuki's rigorous test standards for performance, quality, durability, safety and comfort. We recommend that you choose Suzuki Genuine Accessories and Parts when you need to repair your Suzuki or replace consumable parts such as filters, belt, etc.

Each genuine Accessories and Parts is the perfect match for your Suzuki Product!



SUZUKI MOTOR CORPORATION reserves the right to add any improvement to change the design or to discontinue any item at any time without notice. Some items might not be compatible with local standards or statutory requirements. Please check with your local AUTHORIZED SUZUKI DEALER for details at the time of ordering. Actual colors might differ from those appearing in this catalog.

©2014 SUZUKI MOTOR CORPORATION. All rights reserved.

Printed in Japan. October 2014. Part number: 99000-79N12-175



SUZUKI MOTOR CORPORATION

300 TAKATSUKA-CHO, MINAMI-KU, HAMAMATSU CITY, JAPAN 432-8611

Your AUTHORIZED SUZUKI DEALER

BEFORE YOU SAIL OUT, CHECK YOUR MOTOR AND FUEL FOLLOWING THE OWNER'S MANUAL, AND WEAR PROPER ATTIRE.